

## Product datasheet for TA421922

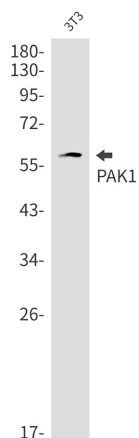
### PAK1 Rabbit Monoclonal Antibody [Clone ID: R02-5G3]

#### Product data:

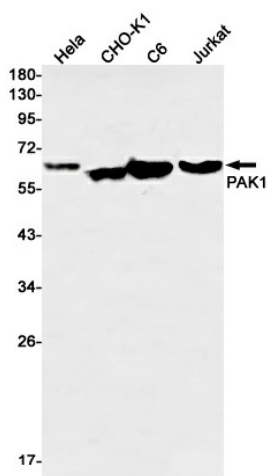
<b>Product Type:</b>	Primary Antibodies
<b>Clone Name:</b>	R02-5G3
<b>Applications:</b>	ICC, ICC/IF, IHC, IP, WB
<b>Recommended Dilution:</b>	WB:1/500-1000;IHC:1/50-100;ICC/IF:1/50-200;IP:1/20
<b>Reactivity:</b>	Human, Mouse, Rat, Hamster
<b>Host:</b>	Rabbit
<b>Isotype:</b>	IgG
<b>Clonality:</b>	Monoclonal
<b>Immunogen:</b>	A synthetic peptide of human PAK1
<b>Formulation:</b>	50mM Tris-Glycine(pH 7.4), 0.15M NaCl, 40% Glycerol, 0.01% Sodium azide and 0.05% BSA
<b>Concentration:</b>	lot specific
<b>Purification:</b>	Affinity Purified
<b>Conjugation:</b>	Unconjugated
<b>Storage:</b>	Store at 4°C short term. Aliquot and store at -20°C long term. Avoid freeze/thaw cycles.
<b>Predicted Protein Size:</b>	Calculated MW: 61 kDa; Observed MW: 61 kDa
<b>Gene Name:</b>	p21 (RAC1) activated kinase 1
<b>Database Link:</b>	<a href="#">Entrez Gene 5058 Human Q13153</a>
<b>Synonyms:</b>	Alpha-PAK; p21-activated kinase 1; p65-PAK; PAK-1; PAK1; Serine/threonine-protein kinase PAK 1



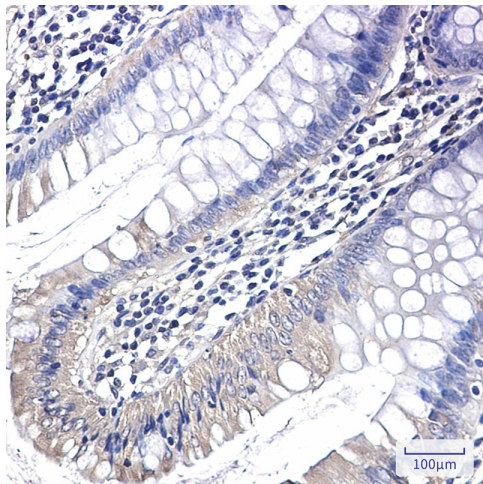
## Product images:



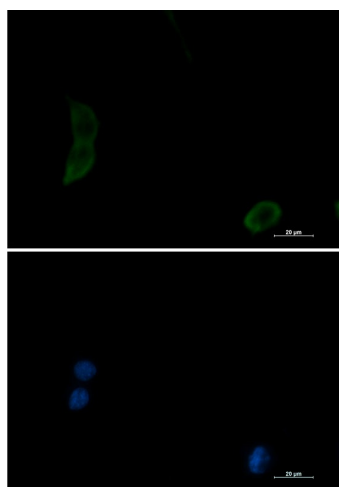
Western blot analysis of PAK1 in 3T3 lysates using PAK1 antibody.



Western blot analysis of PAK1 in HeLa, CHO-K1, C6, Jurkat lysates using PAK1 antibody



Immunohistochemistry analysis of paraffin-embedded Human colon cancer using PAK1 antibody. High-pressure and temperature Sodium Citrate pH 6.0 was used for antigen retrieval.



Immunocytochemistry analysis of PAK1 (green) in 3T3 using PAK1 antibody, and DAPI (blue).