

Product datasheet for TA421916

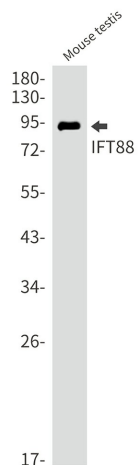
TTC10 (IFT88) Rabbit Monoclonal Antibody [Clone ID: R01-5D7]

Product data:

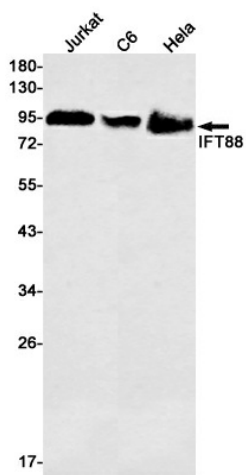
Product Type:	Primary Antibodies
Clone Name:	R01-5D7
Applications:	WB
Recommended Dilution:	WB: 1/500-1/1000
Reactivity:	Human, Mouse, Rat
Host:	Rabbit
Isotype:	IgG
Clonality:	Monoclonal
Immunogen:	A synthetic peptide of human IFT88
Formulation:	50mM Tris-Glycine(pH 7.4), 0.15M NaCl, 40% Glycerol, 0.01% Sodium azide and 0.05% BSA
Concentration:	lot specific
Purification:	Affinity Purified
Conjugation:	Unconjugated
Storage:	Store at 4°C short term. Aliquot and store at -20°C long term. Avoid freeze/thaw cycles.
Predicted Protein Size:	Calculated MW: 93 kDa; Observed MW: 93 kDa
Gene Name:	intraflagellar transport 88
Database Link:	Entrez Gene 8100 Human Q13099
Synonyms:	Recessive polycystic kidney disease protein Tg737 homolog; Tetratricopeptide repeat protein 10; TPR repeat protein 10


[View online »](#)

Product images:



Western blot analysis of IFT88 in mouse testis lysates using IFT88 antibody.



Western blot analysis of IFT88 in Jurkat, C6, HeLa lysates using IFT88 antibody.