

Product datasheet for **TA421907**

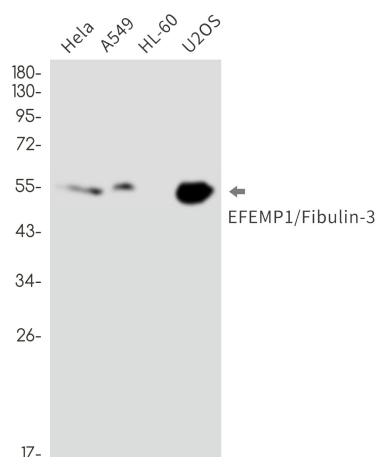
EFEMP1 Rabbit Monoclonal Antibody [Clone ID: R01-7C7]

Product data:

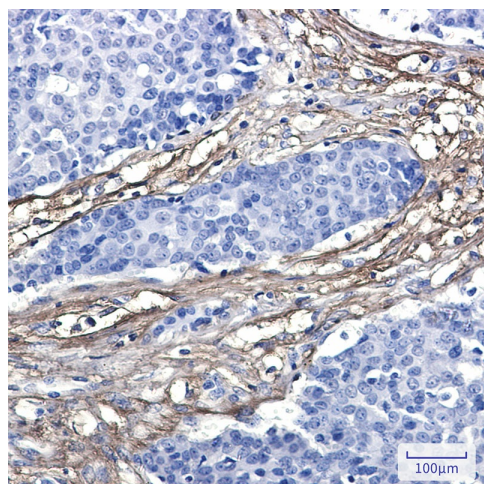
Product Type:	Primary Antibodies
Clone Name:	R01-7C7
Applications:	IHC, IP, WB
Recommended Dilution:	WB: 1/500-1/1000 IHC: 1/50-1/100 IP: 1/20
Reactivity:	Human
Host:	Rabbit
Isotype:	IgG
Clonality:	Monoclonal
Immunogen:	Recombinant protein of human EFEMP1/Fibulin-3
Formulation:	50mM Tris-Glycine(pH 7.4), 0.15M NaCl, 40% Glycerol, 0.01% Sodium azide and 0.05% BSA
Concentration:	lot specific
Purification:	Affinity Purified
Conjugation:	Unconjugated
Storage:	Store at 4°C short term. Aliquot and store at -20°C long term. Avoid freeze/thaw cycles.
Predicted Protein Size:	Calculated MW: 55 kDa; Observed MW: 55 kDa
Gene Name:	EGF containing fibulin like extracellular matrix protein 1
Database Link:	Entrez Gene 2202 Human Q12805
Synonyms:	DHRD; DRAD; FBLN3; FBNL; FIBL-3; Fibulin-3; MLVT; MTLV; S1-5

[View online »](#)

Product images:



Western blot analysis of EFEMP1/Fibulin3 in HeLa, A549, HL-60, U2OS lysates using EFEMP1 antibody.



Immunohistochemistry analysis of paraffin-embedded Human breast cancer using EFEMP1/Fibulin3 antibody. High-pressure and temperature Sodium Citrate pH 6.0 was used for antigen retrieval.