

Product datasheet for **TA421904**

FGL1 Rabbit Monoclonal Antibody [Clone ID: R01-1P-9]

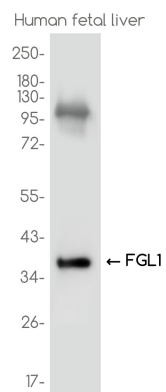
Product data:

Product Type:	Primary Antibodies
Clone Name:	R01-1P-9
Applications:	IP, WB
Recommended Dilution:	WB: 1/500-1/1000 IP: 1/20
Reactivity:	Human, Mouse, Rat
Host:	Rabbit
Isotype:	IgG
Clonality:	Monoclonal
Immunogen:	Peptide
Formulation:	Liquid in 50mM Tris-Glycine(pH 7.4), 0.15M NaCl, 40%Glycerol, 0.01% sodium azide and 0.05% BSA.
Concentration:	lot specific
Purification:	Affinity Purified
Conjugation:	Unconjugated
Storage:	Store at 4°C short term. Aliquot and store at -20°C long term. Avoid freeze/thaw cycles.
Predicted Protein Size:	Calculated MW:36 kDa;Observed MW: 36 kDa
Gene Name:	fibrinogen like 1
Database Link:	Entrez Gene 2267 Human Q08830
Synonyms:	FGL1; Fibrinogen-like protein 1; Hepassocin; Hepatocyte-derived fibrinogen-related protein 1; HFREP-1; HFREP1; HP-041; LFIRE-1; Liver fibrinogen-related protein 1



[View online »](#)

Product images:



Western blot analysis of FGL1 in Human fetal liver lysates using FGL1 antibody.