

## Product datasheet for TA421867

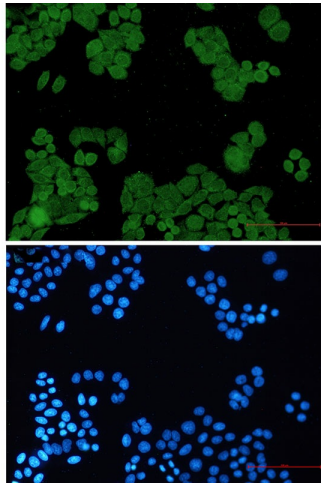
### PP2A-alpha (PPP2CA) Rabbit Monoclonal Antibody [Clone ID: R04-4G4]

#### Product data:

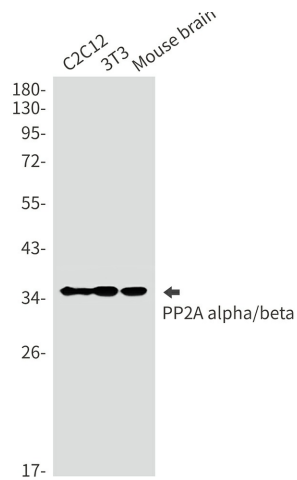
<b>Product Type:</b>	Primary Antibodies
<b>Clone Name:</b>	R04-4G4
<b>Applications:</b>	ICC, ICC/IF, IHC, IP, WB
<b>Recommended Dilution:</b>	WB:1/500-1000;IHC:1/50-100;ICC/IF:1/50-200
<b>Reactivity:</b>	Human, Mouse, Rat, Hamster
<b>Host:</b>	Rabbit
<b>Isotype:</b>	IgG
<b>Clonality:</b>	Monoclonal
<b>Immunogen:</b>	A synthetic peptide of human PP2A alpha
<b>Formulation:</b>	50mM Tris-Glycine(pH 7.4), 0.15M NaCl, 40% Glycerol, 0.01% Sodium azide and 0.05% BSA
<b>Concentration:</b>	lot specific
<b>Purification:</b>	Affinity Purified
<b>Conjugation:</b>	Unconjugated
<b>Storage:</b>	Store at 4°C short term. Aliquot and store at -20°C long term. Avoid freeze/thaw cycles.
<b>Predicted Protein Size:</b>	Calculated MW: 36 kDa; Observed MW: 36 kDa
<b>Gene Name:</b>	protein phosphatase 2 catalytic subunit alpha
<b>Database Link:</b>	<a href="#">Entrez Gene 5515 Human P67775</a>
<b>Synonyms:</b>	PP2A-alpha; PPP2CA; Replication protein C; RP-C; Serine/threonine-protein phosphatase 2A catalytic subunit alpha isoform



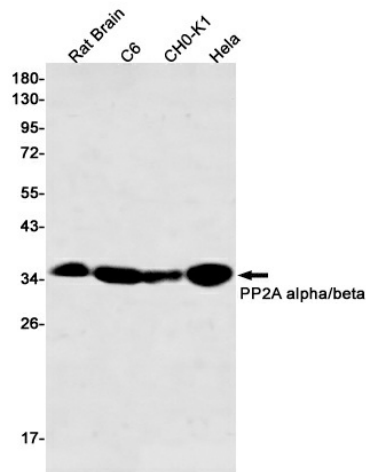
Product images:



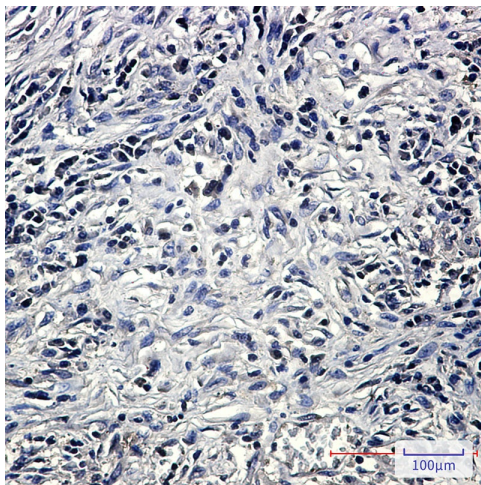
Immunocytochemistry analysis of PP2A alpha/beta (green) in HeLa using PP2A alpha/beta antibody, and DAPI (blue).



Western blot analysis of PP2A alpha/beta in C2C12, 3T3, mouse brain lysates using PP2A alpha/beta antibody.



Western blot analysis of PP2A alpha/beta in rat Brain, C6, CHO-K1, HeLa lysates using PP2A alpha/beta antibody.



Immunohistochemistry analysis of paraffin-embedded Human lung cancer using PP2A alpha/beta antibody. High-pressure and temperature Sodium Citrate pH 6.0 was used for antigen retrieval.