

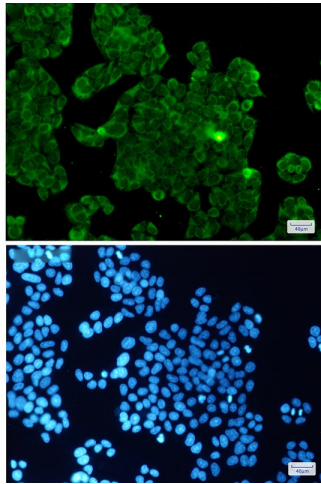
Product datasheet for TA421864

Protein Phosphatase I beta (PPP1CB) Rabbit Monoclonal Antibody [Clone ID: R09-6B7]

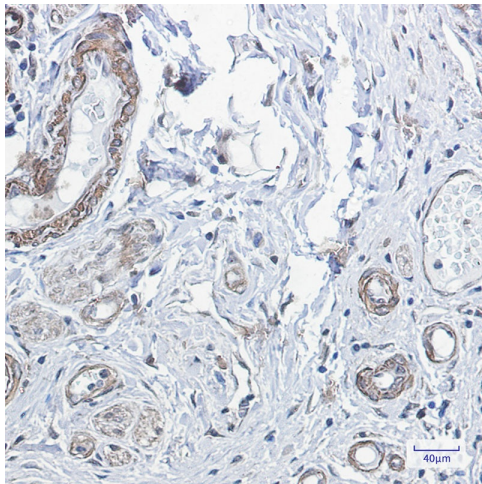
Product data:

Product Type:	Primary Antibodies
Clone Name:	R09-6B7
Applications:	ICC/IF, IHC, IP, WB
Recommended Dilution:	WB: 1/500-1/1000 IHC: 1/50-1/100 IF: 1/50-1/200 IP: 1/20
Reactivity:	Human, Mouse, Rat
Host:	Rabbit
Isotype:	IgG
Clonality:	Monoclonal
Immunogen:	A synthetic peptide of human PPP1CB
Formulation:	50mM Tris-Glycine(pH 7.4), 0.15M NaCl, 40% Glycerol, 0.01% Sodium azide and 0.05% BSA
Concentration:	lot specific
Purification:	Affinity Purified
Conjugation:	Unconjugated
Storage:	Store at 4°C short term. Aliquot and store at -20°C long term. Avoid freeze/thaw cycles.
Predicted Protein Size:	Calculated MW: 37 kDa; Observed MW: 37 kDa
Gene Name:	protein phosphatase 1 catalytic subunit beta
Database Link:	Entrez Gene 5500 Human P62140
Synonyms:	PP-1B; PPP1CB; PPP1CD; Serine/threonine-protein phosphatase PPI-beta catalytic subunit

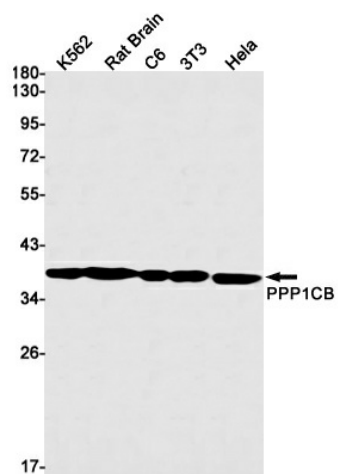


Product images:

Immunocytochemistry analysis of PPP1CB(green) in HeLa using PPP1CB antibody, and DAPI(blue)



Immunohistochemistry analysis of paraffin-embedded Human colon cancer using PPP1CB antibody. High-pressure and temperature Sodium Citrate pH 6.0 was used for antigen retrieval.



Western blot analysis of PPP1CB in K562, rat Brain, C6, 3T3, HeLa lysates using PP1C beta antibody.