

Product datasheet for TA421798

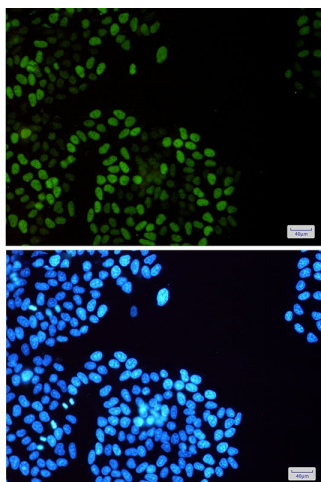
MCM2 Rabbit Monoclonal Antibody [Clone ID: R01-7G9]

Product data:

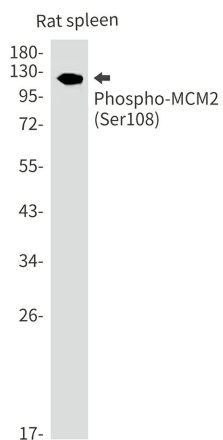
Product Type:	Primary Antibodies
Clone Name:	R01-7G9
Applications:	ICC/IF, IP, WB
Recommended Dilution:	WB: 1/500-1/1000 IF: 1/50-1/200 IP: 1/20
Reactivity:	Human, Mouse, Rat
Host:	Rabbit
Isotype:	IgG
Clonality:	Monoclonal
Immunogen:	A synthetic phosphopeptide corresponding to residues surrounding Ser108 of human MCM2 (Phosphorylated)
Formulation:	50mM Tris-Glycine(pH 7.4), 0.15M NaCl, 40% Glycerol, 0.01% Sodium azide and 0.05% BSA
Concentration:	lot specific
Purification:	Affinity Purified
Conjugation:	Unconjugated
Storage:	Store at 4°C short term. Aliquot and store at -20°C long term. Avoid freeze/thaw cycles.
Predicted Protein Size:	Calculated MW: 102 kDa; Observed MW: 125 kDa
Gene Name:	minichromosome maintenance complex component 2
Database Link:	Entrez Gene 4171 Human P49736
Synonyms:	BM28; CCNL1; CDCL1; DNA replication licensing factor MCM2; KIAA0030; MCM2; Minichromosome maintenance protein 2 homolog; Nuclear protein BM28


[View online »](#)

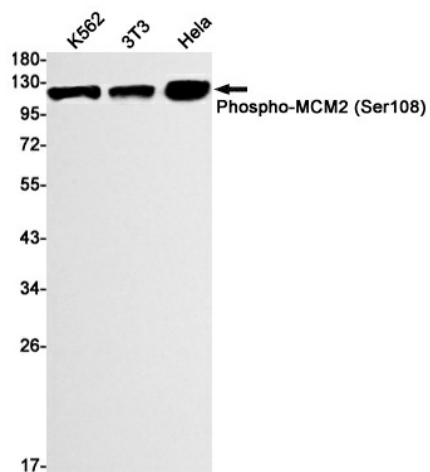
Product images:



Immunocytochemistry analysis of MCM2 (Phospho-Ser108)(green) in HeLa using MCM2 (Phospho-Ser108) antibody, and DAPI(blue)



Western blot analysis of Phospho-MCM2 (Ser108) in rat spleen lysates using Phospho-MCM2 (Ser108) antibody.



Western blot analysis of Phospho-MCM2 (Ser108) in K562, 3T3, HeLa lysates using Phospho-MCM2 (Ser108) antibody.