

Product datasheet for **TA421769**

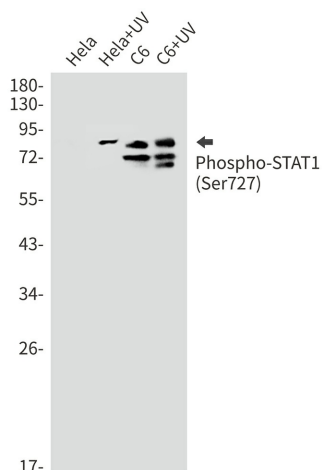
STAT1 Rabbit Monoclonal Antibody [Clone ID: R09-2G9]

Product data:

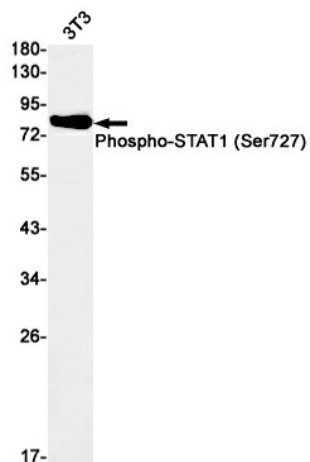
Product Type:	Primary Antibodies
Clone Name:	R09-2G9
Applications:	IHC, WB
Recommended Dilution:	WB: 1/500-1/1000 IHC: 1/50-1/100
Reactivity:	Human, Mouse, Rat
Host:	Rabbit
Isotype:	IgG
Clonality:	Monoclonal
Immunogen:	A synthetic phosphopeptide corresponding to residues surrounding Ser727 of human STAT1 (Phosphorylated)
Formulation:	50mM Tris-Glycine(pH 7.4), 0.15M NaCl, 40% Glycerol, 0.01% Sodium azide and 0.05% BSA
Concentration:	lot specific
Purification:	Affinity Purified
Conjugation:	Unconjugated
Storage:	Store at 4°C short term. Aliquot and store at -20°C long term. Avoid freeze/thaw cycles.
Predicted Protein Size:	Calculated MW: 87 kDa; Observed MW: 87 kDa
Gene Name:	signal transducer and activator of transcription 1
Database Link:	Entrez Gene 6772 Human P42224
Synonyms:	Signal transducer and activator of transcription 1-alpha/beta; STAT1; Transcription factor ISGF-3 components p91/p84

[View online »](#)

Product images:



Western blot analysis of Phospho-STAT1 (Ser727) in HeLa, HeLa+UV, C6, C6+UV lysates using Phospho-STAT1 (Ser727) antibody.



Western blot analysis of Phospho-STAT1 (Ser727) in 3T3 lysates using Phospho-STAT1 (Ser727) antibody.