

Product datasheet for **TA421752**

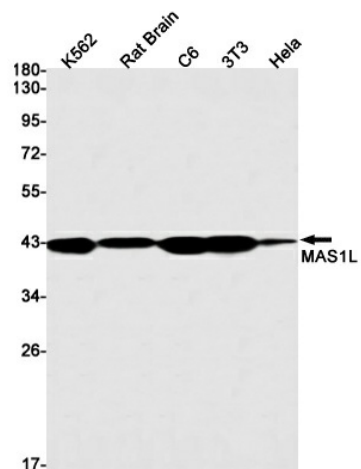
MAS1L Rabbit Monoclonal Antibody [Clone ID: R06-4D9]

Product data:

Product Type:	Primary Antibodies
Clone Name:	R06-4D9
Applications:	IP, WB
Recommended Dilution:	WB: 1/500-1/1000 IP: 1/20
Reactivity:	Human, Mouse, Rat
Host:	Rabbit
Isotype:	IgG
Clonality:	Monoclonal
Immunogen:	A synthetic peptide of human MAS1L
Formulation:	50mM Tris-Glycine(pH 7.4), 0.15M NaCl, 40% Glycerol, 0.01% Sodium azide and 0.05% BSA
Concentration:	lot specific
Purification:	Affinity Purified
Conjugation:	Unconjugated
Storage:	Store at 4°C short term. Aliquot and store at -20°C long term. Avoid freeze/thaw cycles.
Predicted Protein Size:	Calculated MW: 42 kDa; Observed MW: 42 kDa
Gene Name:	MAS1 proto-oncogene like, G protein-coupled receptor
Database Link:	Entrez Gene 116511 Human P35410
Synonyms:	dj994E9.2; MAS-L; MRG

[View online »](#)

Product images:



Western blot analysis of MAS1L in K562, rat Brain, C6, 3T3, HeLa lysates using MAS1L antibody.