

Product datasheet for **TA421732**

AKT1 Rabbit Monoclonal Antibody [Clone ID: R07-4A7]

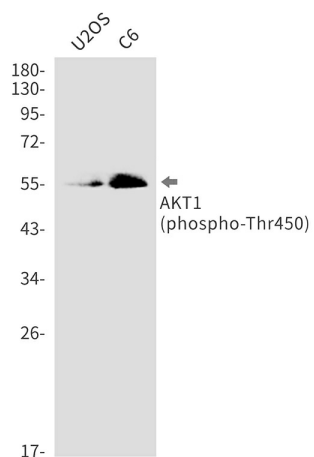
Product data:

Product Type:	Primary Antibodies
Clone Name:	R07-4A7
Applications:	IP, WB
Recommended Dilution:	WB: 1/500-1/1000 IP: 1/20
Reactivity:	Human, Rat
Host:	Rabbit
Isotype:	IgG
Clonality:	Monoclonal
Immunogen:	A synthetic phosphopeptide corresponding to residues surrounding Thr450 of human AKT1 (Phosphorylated)
Formulation:	50mM Tris-Glycine(pH 7.4), 0.15M NaCl, 40% Glycerol, 0.01% Sodium azide and 0.05% BSA
Concentration:	lot specific
Purification:	Affinity Purified
Conjugation:	Unconjugated
Storage:	Store at 4°C short term. Aliquot and store at -20°C long term. Avoid freeze/thaw cycles.
Predicted Protein Size:	Calculated MW: 56 kDa; Observed MW: 56 kDa
Gene Name:	AKT serine/threonine kinase 1
Database Link:	Entrez Gene 207 Human P31749
Synonyms:	AKT1; PKB; PKB alpha; Protein kinase B; Protein kinase B alpha; Proto-oncogene c-Akt; RAC; RAC-alpha serine/threonine-protein kinase; RAC-PK-alpha



[View online »](#)

Product images:



Western blot analysis of Phospho-AKT1 (Thr450) in U2OS, C6 lysates using Phospho-AKT1 (Thr450) antibody.