

## Product datasheet for **TA421716**

### PSMB9 Rabbit Monoclonal Antibody [Clone ID: R04-9C8]

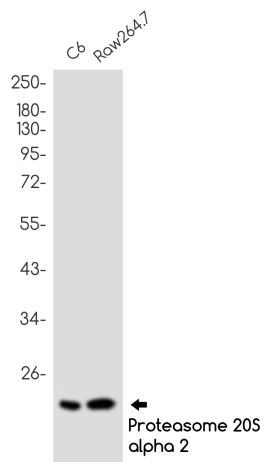
#### Product data:

Product Type:	Primary Antibodies
Clone Name:	R04-9C8
Applications:	ICC/IF, WB
Recommended Dilution:	WB: 1/500-1/1000 IF: 1/50-1/200
Reactivity:	Human, Mouse, Rat
Host:	Rabbit
Isotype:	IgG
Clonality:	Monoclonal
Immunogen:	A synthetic peptide of human Proteasome 20S LMP2
Formulation:	50mM Tris-Glycine(pH 7.4), 0.15M NaCl, 40% Glycerol, 0.01% Sodium azide and 0.05% BSA
Concentration:	lot specific
Purification:	Affinity Purified
Conjugation:	Unconjugated
Storage:	Store at 4°C short term. Aliquot and store at -20°C long term. Avoid freeze/thaw cycles.
Predicted Protein Size:	Calculated MW: 23 kDa; Observed MW: 23 kDa
Gene Name:	proteasome subunit beta 9
Database Link:	<a href="#">Entrez Gene 5698 Human P28065</a>
Synonyms:	Beta1i; LMP2; PSMB6i; PSMB 9; PSMB9; RING12

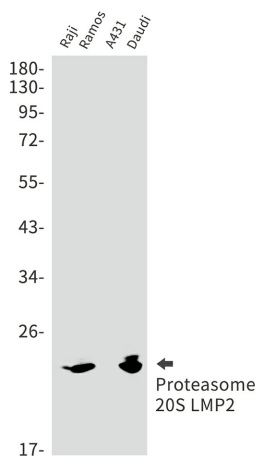


[View online »](#)

## Product images:



Western blot analysis of Proteasome 20S LMP2 in C6, Raw264.7 lysates using Proteasome beta 9 antibody.



Western blot analysis of Proteasome 20S LMP2 in Raji, Ramos, A431, Daudi lysates using Proteasome 20S LMP2 antibody.