

Product datasheet for TA421711

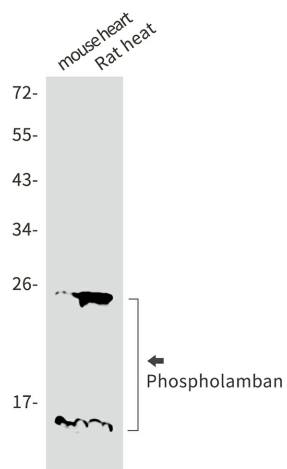
Phospholamban (PLN) Rabbit Monoclonal Antibody [Clone ID: R03-112]

Product data:

Product Type:	Primary Antibodies
Clone Name:	R03-112
Applications:	IHC, IP, WB
Recommended Dilution:	WB: 1/500-1/1000 IHC: 1/50-1/100 IP: 1/20
Reactivity:	Human, Mouse, Rat
Host:	Rabbit
Isotype:	IgG
Clonality:	Monoclonal
Immunogen:	Recombinant protein of human Phospholamban
Formulation:	50mM Tris-Glycine(pH 7.4), 0.15M NaCl, 40% Glycerol, 0.01% Sodium azide and 0.05% BSA
Concentration:	lot specific
Purification:	Affinity Purified
Conjugation:	Unconjugated
Storage:	Store at 4°C short term. Aliquot and store at -20°C long term. Avoid freeze/thaw cycles.
Predicted Protein Size:	Calculated MW: 6 kDa; Observed MW: 12,24 kDa
Gene Name:	phospholamban
Database Link:	Entrez Gene 5350 Human P26678
Synonyms:	Cardiac phospholamban; PLB; PLN

[View online »](#)

Product images:



Western blot analysis of Phospho-lamban in mouse heart, rat heart lysates using Phospho-lamban antibody.