

Product datasheet for **TA421689**

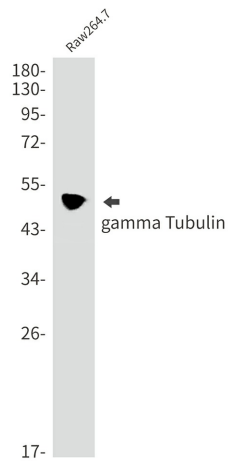
gamma Tubulin (TUBG1) Rabbit Monoclonal Antibody [Clone ID: R06-6A6]

Product data:

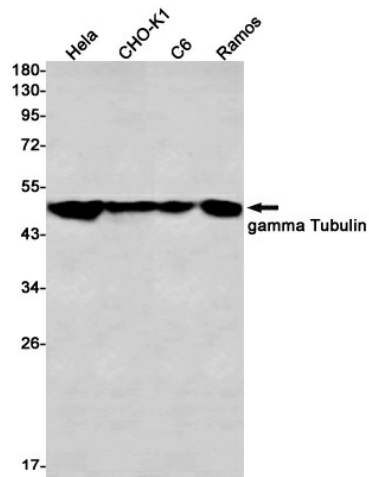
Product Type:	Primary Antibodies
Clone Name:	R06-6A6
Applications:	ICC, ICC/IF, IP, WB
Recommended Dilution:	WB:1/500-1000;ICC/IF:1/50-200;IP:1/20
Reactivity:	Human, Mouse, Rat, Hamster
Host:	Rabbit
Isotype:	IgG
Clonality:	Monoclonal
Immunogen:	Recombinant protein of human gamma Tubulin
Formulation:	50mM Tris-Glycine(pH 7.4), 0.15M NaCl, 40% Glycerol, 0.01% Sodium azide and 0.05% BSA
Concentration:	lot specific
Purification:	Affinity Purified
Conjugation:	Unconjugated
Storage:	Store at 4°C short term. Aliquot and store at -20°C long term. Avoid freeze/thaw cycles.
Predicted Protein Size:	Calculated MW: 51 kDa; Observed MW: 51 kDa
Gene Name:	tubulin gamma 1
Database Link:	Entrez Gene 7283 Human P23258
Synonyms:	Gamma-1-tubulin; Gamma-tubulin complex component 1; GCP-1; TUBG; TUBG1; Tubulin gamma-1 chain



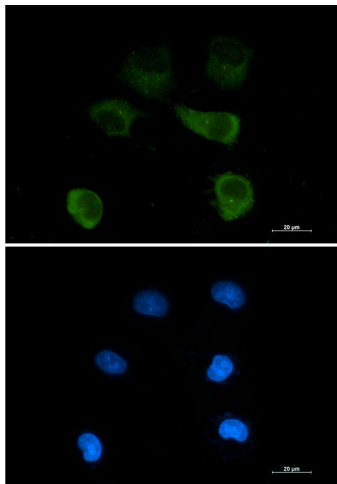
Product images:



Western blot analysis of gamma Tubulin in Raw264.7 lysates using gamma Tubulin antibody.



Western blot analysis of gamma Tubulin in HeLa, CHO-K1, C6, Ramos lysates using gamma Tubulin antibody



Immunocytochemistry analysis of gamma Tubulin (green) in HEPG2 using gamma Tubulin antibody, and DAPI (blue).