

## Product datasheet for TA421662

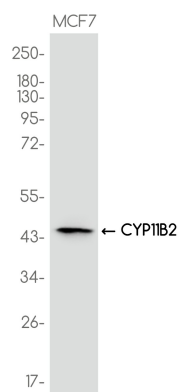
### CYP11B2 Rabbit Monoclonal Antibody [Clone ID: R07-4J-6]

#### Product data:

Product Type:	Primary Antibodies
Clone Name:	R07-4J-6
Applications:	IP, WB
Recommended Dilution:	WB: 1/500-1/1000 IP: 1/20
Reactivity:	Human
Host:	Rabbit
Isotype:	IgG
Clonality:	Monoclonal
Immunogen:	Peptide
Formulation:	Liquid in 50mM Tris-Glycine(pH 7.4), 0.15M NaCl, 40%Glycerol, 0.01% sodium azide and 0.05% BSA.
Concentration:	lot specific
Purification:	Affinity Purified
Conjugation:	Unconjugated
Storage:	Store at 4°C short term. Aliquot and store at -20°C long term. Avoid freeze/thaw cycles.
Predicted Protein Size:	Calculated MW:58 kDa;Observed MW: 45 kDa
Gene Name:	cytochrome P450 family 11 subfamily B member 2
Database Link:	<a href="#">Entrez Gene 1585 Human P19099</a>
Synonyms:	ALDOS; CPN2; CYP11B; CYP11BL; CYPXIB2; P-450C18; P450aldo; P450C18


[View online »](#)

## Product images:



Western blot analysis of CYP11B2 in MCF7 lysates using CYP11B2 antibody.