

## Product datasheet for **TA421642**

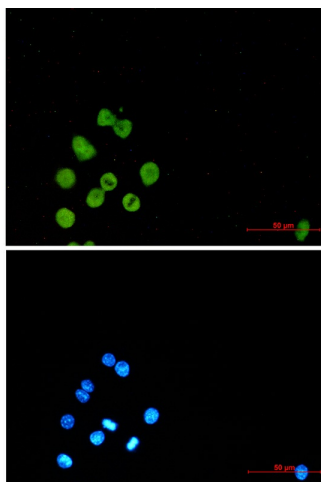
### **Spi1 Rabbit Monoclonal Antibody [Clone ID: R02-1D7]**

#### **Product data:**

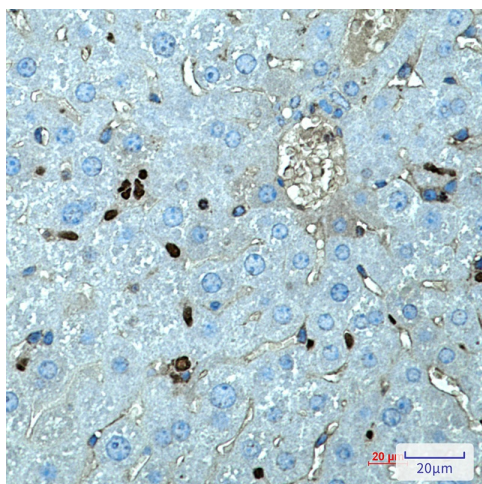
Product Type:	Primary Antibodies
Clone Name:	R02-1D7
Applications:	ICC/IF, IHC, IP, WB
Recommended Dilution:	WB: 1/500-1/1000 IHC: 1/50-1/100 IF: 1/50-1/200 IP: 1/20
Reactivity:	Human, Mouse, Hamster, Rat
Host:	Rabbit
Isotype:	IgG
Clonality:	Monoclonal
Immunogen:	A synthetic peptide of mouse PU.1/Spi1
Formulation:	50mM Tris-Glycine(pH 7.4), 0.15M NaCl, 40% Glycerol, 0.01% Sodium azide and 0.05% BSA
Concentration:	lot specific
Purification:	Affinity Purified
Conjugation:	Unconjugated
Storage:	Store at 4°C short term. Aliquot and store at -20°C long term. Avoid freeze/thaw cycles.
Predicted Protein Size:	Calculated MW: 31 kDa; Observed MW: 31 kDa
Gene Name:	spleen focus forming virus (SFFV) proviral integration oncogene
Database Link:	<a href="#">Entrez Gene 20375 Mouse P17433</a>
Synonyms:	Dis-1; Dis1; PU.1; Sfpi-1; Sfpi1; Spi-1; Tcfpu1; Tfpu.1


[View online »](#)

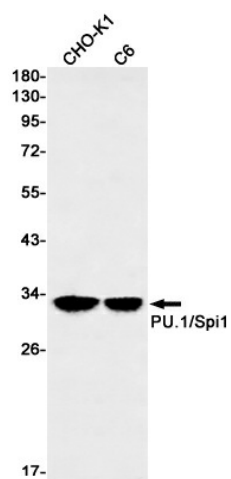
## Product images:



Immunocytochemistry analysis of PU.1/Spi1 (green) in Raw264.7 using PU.1/Spi1 antibody, and DAPI (blue)



Immunohistochemistry analysis of paraffin-embedded mouse liver using SPl1 antibody. High-pressure and temperature Sodium Citrate pH 6.0 was used for antigen retrieval.



Western blot analysis of PU.1/Spi1 in CHO-K1, C6 lysates using PU.1/Spi1 antibody.