

Product datasheet for **TA421539**

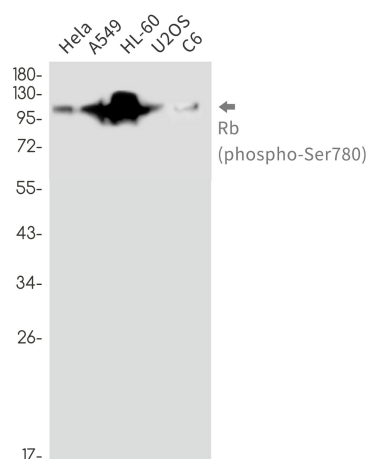
Rb (RB1) Rabbit Monoclonal Antibody [Clone ID: R04-5B7]

Product data:

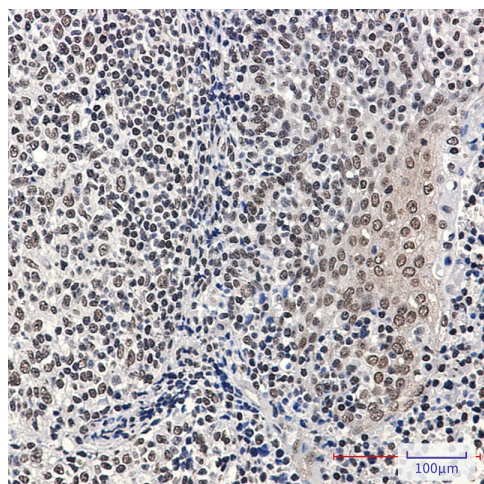
Product Type:	Primary Antibodies
Clone Name:	R04-5B7
Applications:	IHC, WB
Recommended Dilution:	WB: 1/500-1/1000 IHC: 1/50-1/100
Reactivity:	Human, Rat
Host:	Rabbit
Isotype:	IgG
Clonality:	Monoclonal
Immunogen:	A synthetic phosphopeptide corresponding to residues surrounding Ser780 of human Rb (Phosphorylated)
Formulation:	50mM Tris-Glycine(pH 7.4), 0.15M NaCl, 40% Glycerol, 0.01% Sodium azide and 0.05% BSA
Concentration:	lot specific
Purification:	Affinity Purified
Conjugation:	Unconjugated
Storage:	Store at 4°C short term. Aliquot and store at -20°C long term. Avoid freeze/thaw cycles.
Predicted Protein Size:	Calculated MW: 106 kDa; Observed MW: 110 kDa
Gene Name:	RB transcriptional corepressor 1
Database Link:	Entrez Gene 5925 Human P06400
Synonyms:	p105-Rb; pp110; pRb; Rb; RB1; Retinoblastoma-associated protein

[View online »](#)

Product images:



Western blot analysis of Rb (Phospho-Ser780) in HeLa, A549, HL-60, U2OS, C6 lysates using Phospho-Rb (Ser780) antibody.



Immunohistochemistry analysis of paraffin-embedded Human tonsil using Rb (Phospho-Ser780) antibody. High-pressure and temperature Sodium Citrate pH 6.0 was used for antigen retrieval.