

Product datasheet for **TA421533**

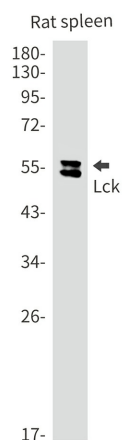
LCK Rabbit Monoclonal Antibody [Clone ID: R01-8A5]

Product data:

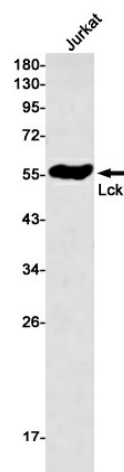
Product Type:	Primary Antibodies
Clone Name:	R01-8A5
Applications:	ICC/IF, IHC, IP, WB
Recommended Dilution:	WB: 1/500-1/1000 IHC: 1/50-1/100 IF: 1/50-1/200 IP: 1/20
Reactivity:	Human, Rat
Host:	Rabbit
Isotype:	IgG
Clonality:	Monoclonal
Immunogen:	Recombinant protein of human Lck
Formulation:	50mM Tris-Glycine(pH 7.4), 0.15M NaCl, 40% Glycerol, 0.01% Sodium azide and 0.05% BSA
Concentration:	lot specific
Purification:	Affinity Purified
Conjugation:	Unconjugated
Storage:	Store at 4°C short term. Aliquot and store at -20°C long term. Avoid freeze/thaw cycles.
Predicted Protein Size:	Calculated MW: 58 kDa; Observed MW: 58 kDa
Gene Name:	LCK proto-oncogene, Src family tyrosine kinase
Database Link:	Entrez Gene 3932 Human P06239
Synonyms:	LCK; Leukocyte C-terminal Src kinase; LSK; Lymphocyte cell-specific protein-tyrosine kinase; p56-LCK; Protein YT16; Proto-oncogene Lck; T cell-specific protein-tyrosine kinase; Tyrosine-protein kinase Lck

[View online »](#)

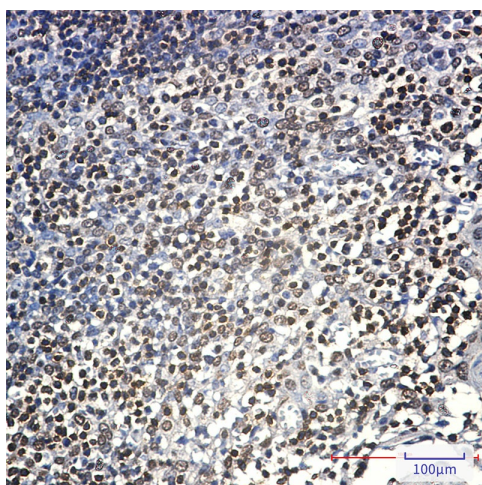
Product images:



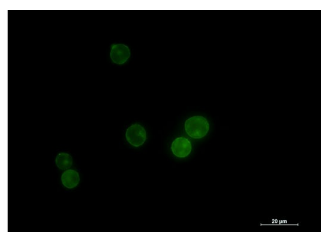
Western blot analysis of Lck in rat spleen lysates using Lck antibody.



Western blot analysis of Lck in Jurkat lysates using Lck antibody



Immunohistochemistry analysis of paraffin-embedded Human tonsil using Lck antibody. High-pressure and temperature Sodium Citrate pH 6.0 was used for antigen retrieval.



Immunocytochemistry analysis of Lck (green) in Jurkat using Lck antibody, and DAPI (blue).