

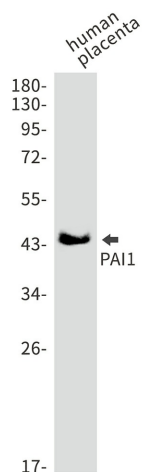
Product datasheet for **TA421526**

PAI1 (SERPINE1) Rabbit Monoclonal Antibody [Clone ID: R05-6J6]

Product data:

Product Type:	Primary Antibodies
Clone Name:	R05-6J6
Applications:	ICC/IF, IP, WB
Recommended Dilution:	WB: 1/500-1/1000 IF: 1/50-1/200 IP: 1/20
Reactivity:	Human, Mouse, Rat
Host:	Rabbit
Isotype:	IgG
Clonality:	Monoclonal
Immunogen:	Recombinant protein of human PAI1
Formulation:	50mM Tris-Glycine(pH 7.4), 0.15M NaCl, 40% Glycerol, 0.01% Sodium azide and 0.05% BSA
Concentration:	lot specific
Purification:	Affinity Purified
Conjugation:	Unconjugated
Storage:	Store at 4°C short term. Aliquot and store at -20°C long term. Avoid freeze/thaw cycles.
Predicted Protein Size:	Calculated MW: 45 kDa; Observed MW: 45 kDa
Gene Name:	serpin family E member 1
Database Link:	Entrez Gene 5054 Human P05121
Synonyms:	Endothelial plasminogen activator inhibitor; PAI; PAI-1; PAI1; PLANH1; Plasminogen activator inhibitor 1; SERPINE1; Serpin E1

[View online »](#)

Product images:

Western blot analysis of PAI1 in Human placenta lysates using PAI1 antibody.