

Product datasheet for **TA421519**

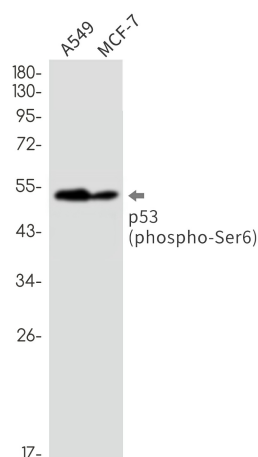
p53 (TP53) Rabbit Monoclonal Antibody [Clone ID: R02-0F2]

Product data:

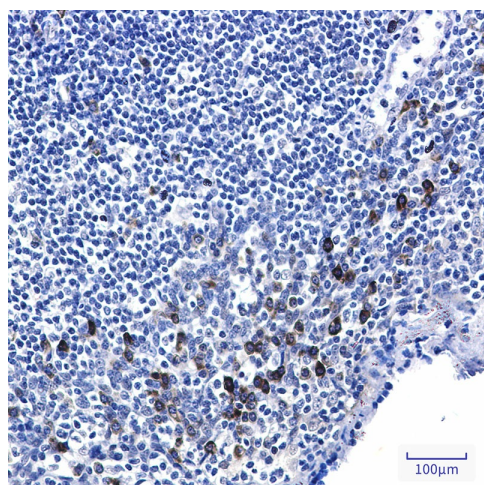
Product Type:	Primary Antibodies
Clone Name:	R02-0F2
Applications:	IHC, IP, WB
Recommended Dilution:	WB: 1/500-1/1000 IHC: 1/50-1/100 IP: 1/20
Reactivity:	Human
Host:	Rabbit
Isotype:	IgG
Clonality:	Monoclonal
Immunogen:	A synthetic phosphopeptide corresponding to residues surrounding Ser6 of human p53 (Phosphorylated)
Formulation:	50mM Tris-Glycine(pH 7.4), 0.15M NaCl, 40% Glycerol, 0.01% Sodium azide and 0.05% BSA
Concentration:	lot specific
Purification:	Affinity Purified
Conjugation:	Unconjugated
Storage:	Store at 4°C short term. Aliquot and store at -20°C long term. Avoid freeze/thaw cycles.
Predicted Protein Size:	Calculated MW: 44 kDa; Observed MW: 53 kDa
Gene Name:	tumor protein p53
Database Link:	Entrez Gene 7157 Human P04637
Synonyms:	Antigen NY-CO-13; Cellular tumor antigen p53; P53; Phosphoprotein p53; TP53; Tumor suppressor p53

[View online »](#)

Product images:



Western blot analysis of Phospho-p53 (Ser6) in A549, MCF-7 lysates using Phospho-p53 (Ser6) antibody.



Immunohistochemistry analysis of paraffin-embedded Human tonsil using p53 (Phospho-Ser6) antibody. High-pressure and temperature Sodium Citrate pH 6.0 was used for antigen retrieval.