

Product datasheet for **TA421517**

HLAA (HLA-A) Rabbit Monoclonal Antibody [Clone ID: R05-5H7]

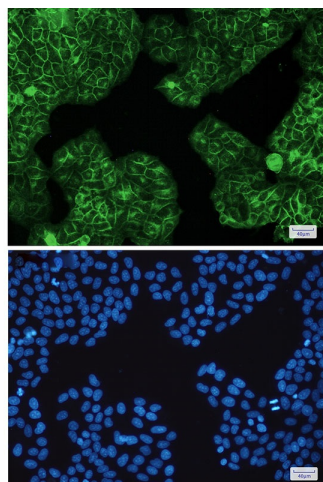
Product data:

Product Type:	Primary Antibodies
Clone Name:	R05-5H7
Applications:	ICC/IF, IHC, IP, WB
Recommended Dilution:	WB: 1/500-1/1000 IHC: 1/50-1/100 IF: 1/50-1/200 IP: 1/20
Reactivity:	Human
Host:	Rabbit
Isotype:	IgG
Clonality:	Monoclonal
Immunogen:	A synthetic peptide of human HLA A
Formulation:	50mM Tris-Glycine(pH 7.4), 0.15M NaCl, 40% Glycerol, 0.01% Sodium azide and 0.05% BSA
Concentration:	lot specific
Purification:	Affinity Purified
Conjugation:	Unconjugated
Storage:	Store at 4°C short term. Aliquot and store at -20°C long term. Avoid freeze/thaw cycles.
Predicted Protein Size:	Calculated MW: 41 kDa; Observed MW: 41 kDa
Gene Name:	major histocompatibility complex, class I, A
Database Link:	Entrez Gene 3105 Human P04439
Synonyms:	A-28 alpha chain; Aw-68; HLA-A; HLA class I histocompatibility antigen; MHC class I antigen A*68; MHC class I antigen HLA A heavy chain

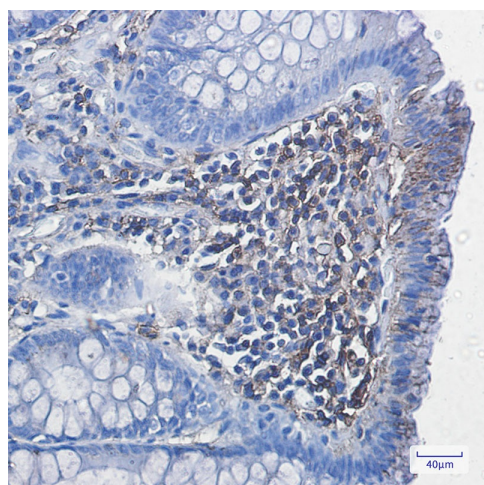


[View online »](#)

Product images:



Immunocytochemistry analysis of HLA A (green) in Hela using HLA A antibody, and DAPI (blue)



Immunohistochemistry analysis of paraffin-embedded Human colon cancer using HLA A antibody. High-pressure and temperature Sodium Citrate pH 6.0 was used for antigen retrieval.

□

Western blot analysis of HLAA in K562, Hela lysates using HLA A antibody.