

Product datasheet for **TA421493**

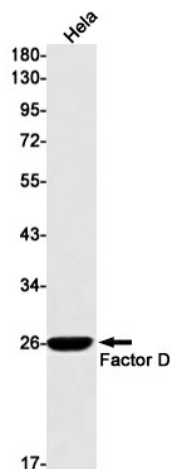
Factor D (CFD) Rabbit Monoclonal Antibody [Clone ID: R09-6A9]

Product data:

Product Type:	Primary Antibodies
Clone Name:	R09-6A9
Applications:	WB
Recommended Dilution:	WB: 1/500-1/1000
Reactivity:	Human
Host:	Rabbit
Isotype:	IgG
Clonality:	Monoclonal
Immunogen:	Recombinant protein of human Factor D
Formulation:	50mM Tris-Glycine(pH 7.4), 0.15M NaCl, 40% Glycerol, 0.01% Sodium azide and 0.05% BSA
Concentration:	lot specific
Purification:	Affinity Purified
Conjugation:	Unconjugated
Storage:	Store at 4°C short term. Aliquot and store at -20°C long term. Avoid freeze/thaw cycles.
Predicted Protein Size:	Calculated MW: 27 kDa; Observed MW: 27 kDa
Gene Name:	complement factor D
Database Link:	Entrez Gene 1675 Human P00746
Synonyms:	ADIPSIN; ADN; DF; PFD

[View online »](#)

Product images:



Western blot analysis of Factor D in HeLa lysates using Factor D antibody.