

Product datasheet for **TA421488**

MTCO2 (COX2) Rabbit Monoclonal Antibody [Clone ID: R05-2E2]

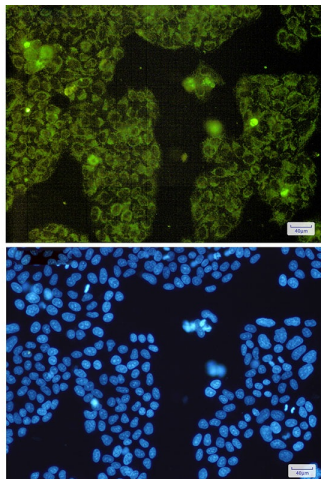
Product data:

Product Type:	Primary Antibodies
Clone Name:	R05-2E2
Applications:	ICC/IF, IHC, IP, WB
Recommended Dilution:	WB: 1/500-1/1000 IHC: 1/50-1/100 IF: 1/50-1/200 IP: 1/20
Reactivity:	Human
Host:	Rabbit
Isotype:	IgG
Clonality:	Monoclonal
Immunogen:	A synthetic peptide of human MTCO2
Formulation:	50mM Tris-Glycine(pH 7.4), 0.15M NaCl, 40% Glycerol, 0.01% Sodium azide and 0.05% BSA
Concentration:	lot specific
Purification:	Affinity Purified
Conjugation:	Unconjugated
Storage:	Store at 4°C short term. Aliquot and store at -20°C long term. Avoid freeze/thaw cycles.
Predicted Protein Size:	Calculated MW: 26 kDa; Observed MW: 21 kDa
Gene Name:	mitochondrially encoded cytochrome c oxidase II
Database Link:	Entrez Gene 4513 Human P00403
Synonyms:	CO2; COII; COX2; COXII; Cytochrome c oxidase II; MT-CO2; MTCO2

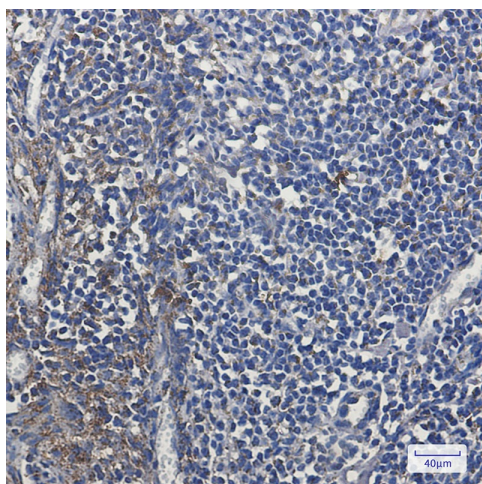


[View online »](#)

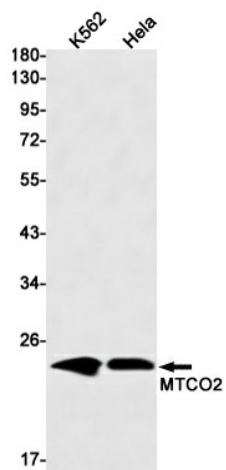
Product images:



Immunocytochemistry analysis of MTCO2(green) in Hela using MTCO2 antibody, and DAPI(blue)



Immunohistochemistry analysis of paraffin-embedded Human tonsil using MTCO2 antibody. High-pressure and temperature Sodium Citrate pH 6.0 was used for antigen retrieval.



Western blot analysis of MTCO2 in K562, HeLa lysates using MTCO2 antibody.