

Product datasheet for TA421466

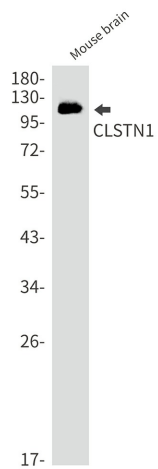
CLSTNI Rabbit Monoclonal Antibody [Clone ID: R07-8H2]

Product data:

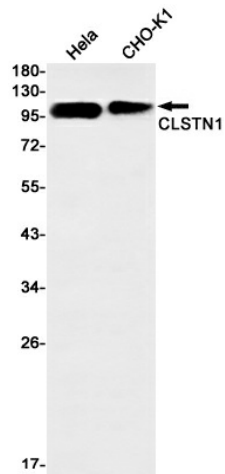
Product Type:	Primary Antibodies
Clone Name:	R07-8H2
Applications:	ICC, ICC/IF, IHC, WB
Recommended Dilution:	WB:1/500-1000;IHC:1/50-100;ICC/IF:1/50-200
Reactivity:	Human, Mouse, Hamster
Host:	Rabbit
Isotype:	IgG
Clonality:	Monoclonal
Immunogen:	A synthetic peptide of human CLSTNI
Formulation:	50mM Tris-Glycine(pH 7.4), 0.15M NaCl, 40% Glycerol, 0.01% Sodium azide and 0.05% BSA
Concentration:	lot specific
Purification:	Affinity Purified
Conjugation:	Unconjugated
Storage:	Store at 4°C short term. Aliquot and store at -20°C long term. Avoid freeze/thaw cycles.
Predicted Protein Size:	Calculated MW: 110 kDa; Observed MW: 115 kDa
Gene Name:	calsyntenin 1
Database Link:	Entrez Gene 22883 Human O94985
Synonyms:	Alcadein alpha 1; alcalpha1; alcalpha2; Calsyntenin 1; CDHR12; Clstn1; CSI; CSTNI; PIK3CD; XB31alpha



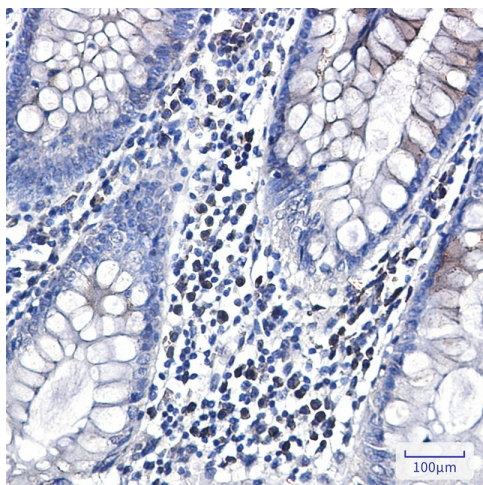
Product images:



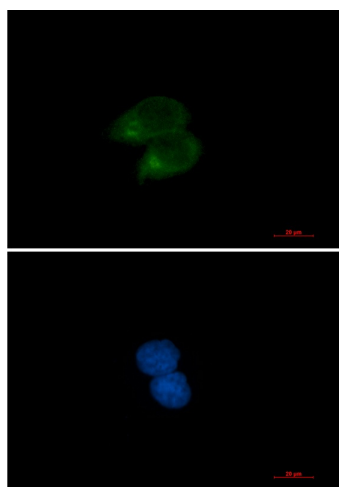
Western blot analysis of CLSTN1 in mouse brain lysates using CLSTN1 antibody.



Western blot analysis of CLSTN1 in HeLa, CHO-K1 lysates using CLSTN1 antibody



Immunohistochemistry analysis of paraffin-embedded Human colon cancer using CLSTN1 antibody. High-pressure and temperature Sodium Citrate pH 6.0 was used for antigen retrieval.



Immunocytochemistry analysis of CLSTN1 (green) in HeLa using CLSTN1 antibody, and DAPI (blue).