

Product datasheet for **TA421463**

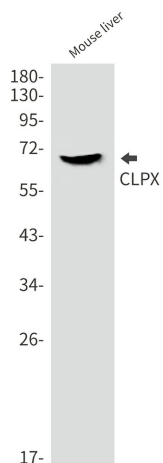
CLPX Rabbit Monoclonal Antibody [Clone ID: R05-2A6]

Product data:

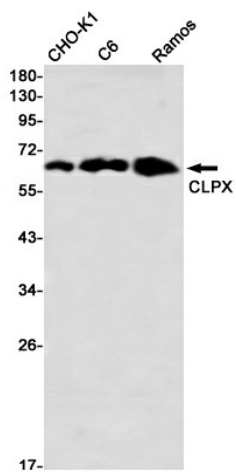
Product Type:	Primary Antibodies
Clone Name:	R05-2A6
Applications:	ICC, ICC/IF, WB
Recommended Dilution:	WB:1/500-1000;ICC/IF:1/50-200
Reactivity:	Human, Mouse, Rat, Hamster
Host:	Rabbit
Isotype:	IgG
Clonality:	Monoclonal
Immunogen:	A synthetic peptide of human CLPX
Formulation:	50mM Tris-Glycine(pH 7.4), 0.15M NaCl, 40% Glycerol, 0.01% Sodium azide and 0.05% BSA
Concentration:	lot specific
Purification:	Affinity Purified
Conjugation:	Unconjugated
Storage:	Store at 4°C short term. Aliquot and store at -20°C long term. Avoid freeze/thaw cycles.
Predicted Protein Size:	Calculated MW: 69 kDa; Observed MW: 69 kDa
Gene Name:	caseinolytic mitochondrial matrix peptidase chaperone subunit
Database Link:	Entrez Gene 10845 Human O76031
Synonyms:	ATP-dependent Clp protease ATP-binding subunit clpX-like; CLPX; mitochondrial



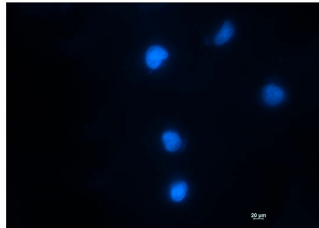
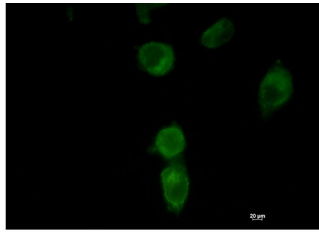
Product images:



Western blot analysis of CLPX in mouse liver lysates using CLPX antibody.



Western blot analysis of CLPX in CHO-K1, C6, Ramos lysates using CLPX antibody



Immunocytochemistry analysis of CLPX (green) in HT-1080 using CLPX antibody, and DAPI (blue).