

Product datasheet for TA421456

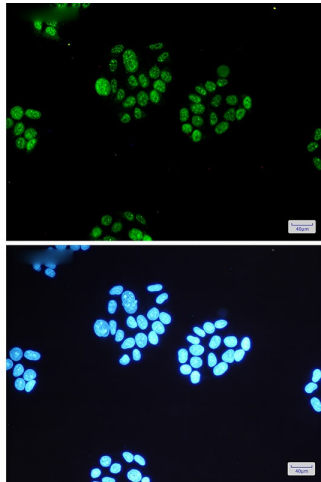
Phospho MSK1 (Ser360) Rabbit Monoclonal Antibody [Clone ID: R03-1G8]

Product data:

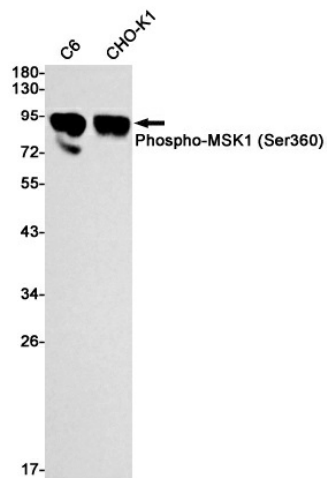
Product Type:	Primary Antibodies
Clone Name:	R03-1G8
Applications:	ICC, ICC/IF, IP, WB
Recommended Dilution:	WB:1/500-1000;ICC/IF:1/50-200
Reactivity:	Human, Mouse, Rat, Hamster
Host:	Rabbit
Isotype:	IgG
Clonality:	Monoclonal
Immunogen:	A synthetic phosphopeptide corresponding to residues surrounding Ser360 of human MSK1 (Phosphorylated)
Formulation:	50mM Tris-Glycine(pH 7.4), 0.15M NaCl, 40% Glycerol, 0.01% Sodium azide and 0.05% BSA
Concentration:	lot specific
Purification:	Affinity Purified
Conjugation:	Unconjugated
Storage:	Store at 4°C short term. Aliquot and store at -20°C long term. Avoid freeze/thaw cycles.
Predicted Protein Size:	Calculated MW: 90 kDa; Observed MW: 90 kDa
Gene Name:	ribosomal protein S6 kinase A5
Database Link:	Entrez Gene 9252 Human O75582
Synonyms:	90 kDa ribosomal protein S6 kinase 5; MSK1; Nuclear mitogen- and stress-activated protein kinase 1; Ribosomal protein S6 kinase alpha-5; RPS6KA5; RSK-like protein kinase; RSKL; S6K-alpha-5



Product images:



Immunocytochemistry analysis of MSK1 (Phospho- S360)(green) in HeLa using MSK1 (Phospho- S360) antibody, and DAPI(blue)



Western blot analysis of Phospho-MSK1 (Ser360) in C6, CHO-K1 lysates using Phospho-MSK1 (Ser360) antibody.