

Product datasheet for TA421440

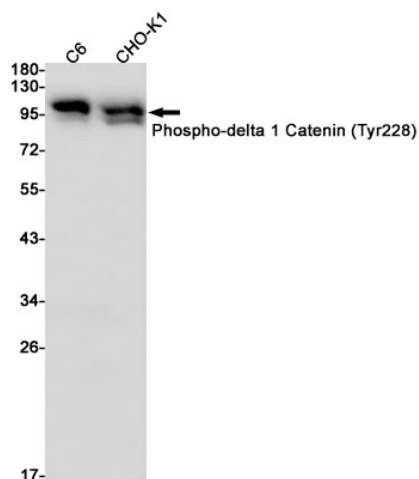
Phospho delta 1 Catenin (Tyr228) Rabbit Monoclonal Antibody [Clone ID: R08-5A8]

Product data:

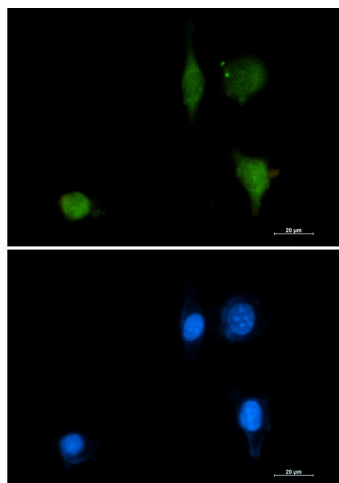
Product Type:	Primary Antibodies
Clone Name:	R08-5A8
Applications:	ICC, ICC/IF, IP, WB
Recommended Dilution:	WB:1/500-1000;ICC/IF:1/50-200
Reactivity:	Rat, Hamster, Human, Mouse
Host:	Rabbit
Isotype:	IgG
Clonality:	Monoclonal
Immunogen:	A synthetic phosphopeptide corresponding to residues surrounding Tyr228 of human delta 1 Catenin (Phosphorylated)
Formulation:	50mM Tris-Glycine(pH 7.4), 0.15M NaCl, 40% Glycerol, 0.01% Sodium azide and 0.05% BSA
Concentration:	lot specific
Purification:	Affinity Purified
Conjugation:	Unconjugated
Storage:	Store at 4°C short term. Aliquot and store at -20°C long term. Avoid freeze/thaw cycles.
Predicted Protein Size:	Calculated MW: 108 kDa; Observed MW: 95,100 kDa
Gene Name:	catenin delta 1
Database Link:	Entrez Gene 1500 Human O60716
Synonyms:	BCDS2; CAS; CTNND; p120; p120(CAS); p120(CTN); P120CAS; P120CTN



Product images:



Western blot analysis of Phospho-delta 1 Catenin (Tyr228) in C6, CHO-K1 lysates using Phospho-delta 1 Catenin (Tyr228) antibody.



Immunocytochemistry analysis of Phospho-delta 1 Catenin (Tyr228) (green) in SKOV-3 using Phospho-delta 1 Catenin (Tyr228) antibody, and DAPI (blue).