

Product datasheet for **TA421411**

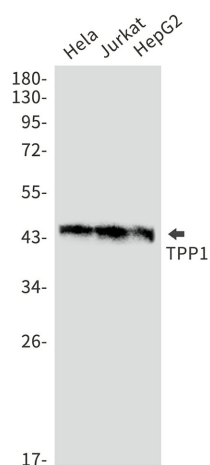
TPP1 Rabbit Monoclonal Antibody [Clone ID: R09-2G9]

Product data:

Product Type:	Primary Antibodies
Clone Name:	R09-2G9
Applications:	IHC, WB
Recommended Dilution:	WB: 1/500-1/1000 IHC: 1/50-1/100
Reactivity:	Human
Host:	Rabbit
Isotype:	IgG
Clonality:	Monoclonal
Immunogen:	Recombinant protein of human TPP1
Formulation:	50mM Tris-Glycine(pH 7.4), 0.15M NaCl, 40% Glycerol, 0.01% Sodium azide and 0.05% BSA
Concentration:	lot specific
Purification:	Affinity Purified
Conjugation:	Unconjugated
Storage:	Store at 4°C short term. Aliquot and store at -20°C long term. Avoid freeze/thaw cycles.
Predicted Protein Size:	Calculated MW: 61 kDa; Observed MW: 61,48 kDa
Gene Name:	tripeptidyl peptidase 1
Database Link:	Entrez Gene 1200 Human O14773
Synonyms:	CLN2; GIG1; LPIC; SCAR7; TPP-1

[View online »](#)

Product images:



Western blot analysis of TPP1 in HeLa, Jurkat, HepG2 lysates using TPP1 antibody.