

## Product datasheet for TA421400

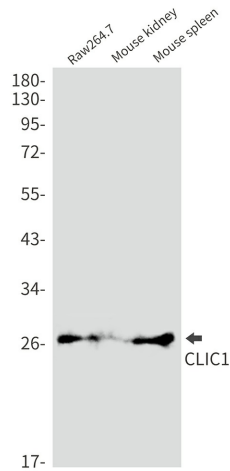
### CLIC1 Rabbit Monoclonal Antibody [Clone ID: R08-4A2]

#### Product data:

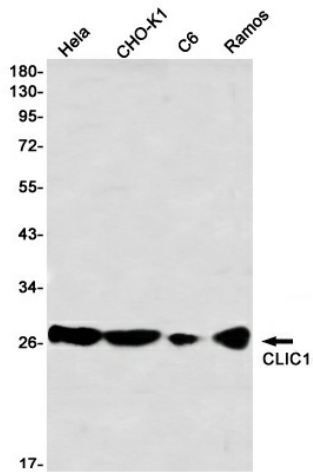
<b>Product Type:</b>	Primary Antibodies
<b>Clone Name:</b>	R08-4A2
<b>Applications:</b>	ICC, ICC/IF, IP, WB
<b>Recommended Dilution:</b>	WB:1/500-1000;ICC/IF:1/50-200;IP:1/20
<b>Reactivity:</b>	Human, Mouse, Rat, Hamster
<b>Host:</b>	Rabbit
<b>Isotype:</b>	IgG
<b>Clonality:</b>	Monoclonal
<b>Immunogen:</b>	Recombinant protein of human CLIC1
<b>Formulation:</b>	50mM Tris-Glycine(pH 7.4), 0.15M NaCl, 40% Glycerol, 0.01% Sodium azide and 0.05% BSA
<b>Concentration:</b>	lot specific
<b>Purification:</b>	Affinity Purified
<b>Conjugation:</b>	Unconjugated
<b>Storage:</b>	Store at 4°C short term. Aliquot and store at -20°C long term. Avoid freeze/thaw cycles.
<b>Predicted Protein Size:</b>	Calculated MW: 27 kDa; Observed MW: 27 kDa
<b>Gene Name:</b>	chloride intracellular channel 1
<b>Database Link:</b>	<a href="#">Entrez Gene 1192 Human</a> <a href="#">O00299</a>
<b>Synonyms:</b>	Chloride channel ABP; Chloride intracellular channel protein 1; hRNCC; NCC27; Nuclear chloride ion channel 27; Regulatory nuclear chloride ion channel protein



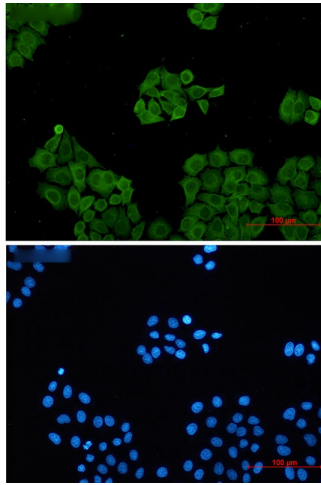
Product images:



Western blot analysis of CLIC1 in Raw264.7, mouse kidney, mouse spleen lysates using CLIC1 antibody.



Western blot analysis of CLIC1 in HeLa, CHO-K1, C6, Ramos lysates using CLIC1 antibody



Immunocytochemistry analysis of CLIC1 (green) in HeLa using CLIC1 antibody, and DAPI (blue).