

## Product datasheet for **TA421397**

### Menin (MEN1) Rabbit Monoclonal Antibody [Clone ID: R05-6A9]

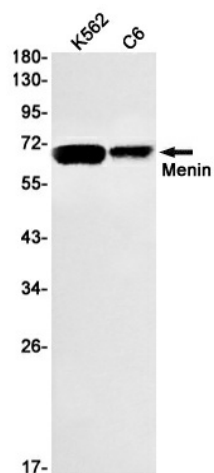
#### Product data:

Product Type:	Primary Antibodies
Clone Name:	R05-6A9
Applications:	IP, WB
Recommended Dilution:	WB: 1/500-1/1000 IP: 1/20
Reactivity:	Human, Rat
Host:	Rabbit
Isotype:	IgG
Clonality:	Monoclonal
Immunogen:	A synthetic peptide of human Menin
Formulation:	50mM Tris-Glycine(pH 7.4), 0.15M NaCl, 40% Glycerol, 0.01% Sodium azide and 0.05% BSA
Concentration:	lot specific
Purification:	Affinity Purified
Conjugation:	Unconjugated
Storage:	Store at 4°C short term. Aliquot and store at -20°C long term. Avoid freeze/thaw cycles.
Predicted Protein Size:	Calculated MW: 68 kDa; Observed MW: 68 kDa
Gene Name:	menin 1
Database Link:	<a href="#">Entrez Gene 4221 Human O00255</a>
Synonyms:	MEN1; Menin; SCG2



[View online »](#)

## Product images:



Western blot analysis of Menin in K562, C6 lysates using Menin antibody.