

Product datasheet for **TA421357**

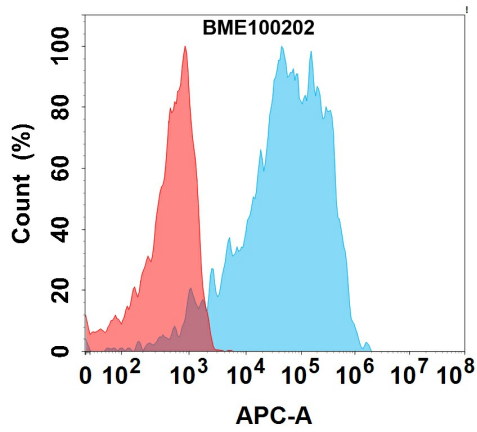
Anti-Canine PD-1(INTERVET 4F12) mAb

Product data:

Product Type:	Primary Antibodies
Applications:	ELISA, FC
Recommended Dilution:	ELISA 1:5000–10000 FC 1:100
Reactivity:	Canine
Host:	Chimeric Rabbit
Isotype:	IgG
Clonality:	Monoclonal
Formulation:	Lyophilized from sterile PBS, pH 7.4. Normally 5 % - 8% trehalose is added as protectants before lyophilization.
Reconstitution Method:	<ol style="list-style-type: none">1. Before opening the tube cap, centrifuge the sample tube at 5000g for 3–5min at room temperature to ensure the lyophilized sample settles down at the bottom of the tube.2. Calculate the volume for reconstitution (in μL) using the formula: $[\text{Quantity (mg)}/\text{Concentration (mg/mL)}] \times 1000$3. Dissolve the lyophilized protein sample in sterile water based on the calculated volume (μL) After adding sterile water, cover the lid and mix by gently tapping the tube 5–10 times. Note: Do not vortex or vigorously pipette the sample.
Concentration:	Lot specific
Conjugation:	Unconjugated
Stability:	12 months from date of dispatch
Database Link:	NP_001301026.1
Background:	Research grade biosimilar. Not for use in therapeutic or diagnostic procedures for humans or animals.

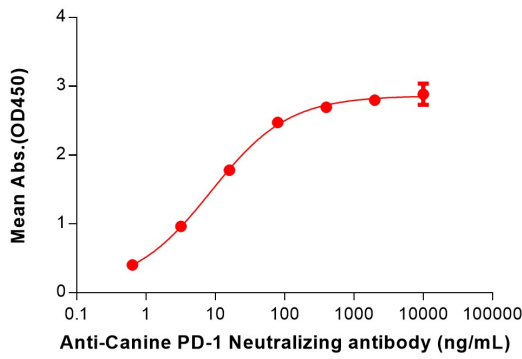


Product images:



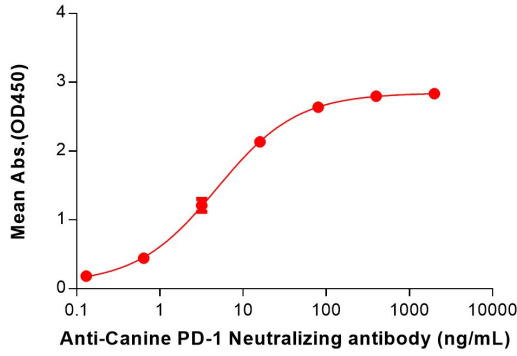
Anti-Canine PD-1 (INTERVET 4F12) mAb ELISA

0.2 µg of Canine PD-1, His tagged protein per well



Anti-Canine PD-1(INTERVET 4F12) mAb ELISA

0.2 µg of Canine PD-1, hFc tagged protein per well



Anti-Canine PD-1(INTERVET 4F12) mAb ELISA

0.2 µg of Canine PD-1, mFc tagged protein per well

