

Product datasheet for **TA421291**

Anti-GM-CSF (plonmarlimab biosimilar) mAb

Product data:

Product Type:	Primary Antibodies
Applications:	ELISA, FC
Recommended Dilution:	ELISA 1:5000–10000 Flow Cyt 1:100
Reactivity:	Human
Host:	Humanized
Isotype:	IgG1, kappa
Clonality:	Monoclonal
Formulation:	Lyophilized from sterile PBS, pH 7.4. Normally 5 % – 8% trehalose is added as protectants before lyophilization. Please see Certificate of Analysis for specific instructions of reconstitution.
Reconstitution Method:	Lyophilized from sterile PBS, pH 7.4. Normally 5 % – 8% trehalose is added as protectants before lyophilization. Please see Certificate of Analysis for specific instructions of reconstitution.
Concentration:	Lot specific
Conjugation:	Unconjugated
Storage:	Store at –20°C to –80°C for 12 months in lyophilized form. After reconstitution, if not intended for use within a month, aliquot and store at –80°C (Avoid repeated freezing and thawing). Lyophilized proteins are shipped at ambient temperature.
Stability:	12 months from date of despatch
Database Link:	P04141
Background:	Research grade biosimilar. Not for use in therapeutic or diagnostic procedures for humans or animals.
Synonyms:	CSF; CSF2
Note:	Common Name: TJ-003234, TJM-2



Product images:

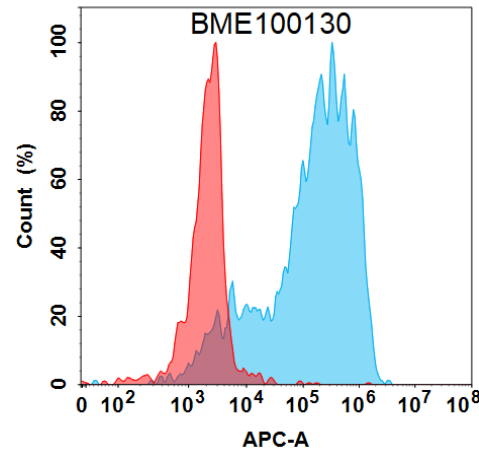


Figure 2. Flow cytometry analysis under cell membrane permeable condition with 1 µg/mL Anti-GM-CSF (plonmarlimab biosimilar) mAb (TA421291) on HEK293 cells transfected with Human GM-CSF protein (Blue histogram) or HEK293 transfected with irrelevant protein (Red histogram).

Anti-GM-CSF (plonmarlimab biosimilar) mAb ELISA

0.2 µg of Human GM-CSF, hFc tagged protein per well

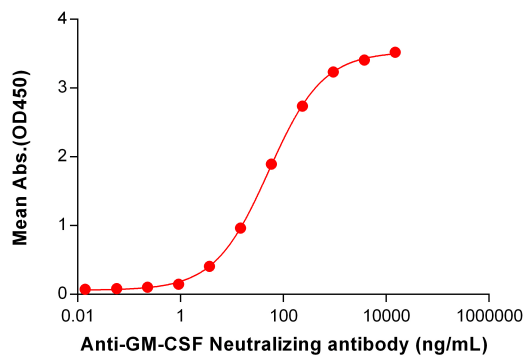


Figure 1. ELISA plate pre-coated by 2 µg/mL (100 µL/well) Human GM-CSF Protein, hFc Tag ([TP724173]) can bind Anti-GM-CSF Neutralizing antibody (TA421291) in a linear range of 0.92–937.50 ng/mL. In order to specifically detect TA421291, mouse anti-human Fab-specific antibody was used as detection antibody.