

## Product datasheet for **TA421210AM**

### Anti-CD30 (brentuximab biosimilar) mAb, Biotinylated

#### Product data:

<b>Product Type:</b>	Primary Antibodies
<b>Applications:</b>	ELISA, FC
<b>Recommended Dilution:</b>	ELISA 1:5000–10000 Flow Cyt 1µg/ml
<b>Reactivity:</b>	Human
<b>Host:</b>	Chimeric
<b>Isotype:</b>	IgG1, kappa
<b>Clonality:</b>	Monoclonal
<b>Formulation:</b>	50% Glycerol; PBS, pH 7.4; 0.1% BSA Preservative: 0.1% Procline 300
<b>Reconstitution Method:</b>	Lyophilized from sterile PBS, pH 7.4. Normally 5 % – 8% trehalose is added as protectants before lyophilization. Please see Certificate of Analysis for specific instructions of reconstitution.
<b>Concentration:</b>	Lot specific
<b>Conjugation:</b>	Unconjugated
<b>Storage:</b>	Store at –20°C to –80°C for 12 months in lyophilized form. After reconstitution, if not intended for use within a month, aliquot and store at –80°C (Avoid repeated freezing and thawing). Lyophilized proteins are shipped at ambient temperature.
<b>Stability:</b>	12 months from date of despatch
<b>Database Link:</b>	<a href="#">P28908</a>
<b>Background:</b>	Research grade biosimilar. Not for use in therapeutic or diagnostic procedures for humans or animals.
<b>Synonyms:</b>	CD30; DIS166E; Ki-1; TNFRSF8
<b>Note:</b>	<b>Common Name:</b> SGN-35, cAC10-Val-Cit-MMAE



Product images:

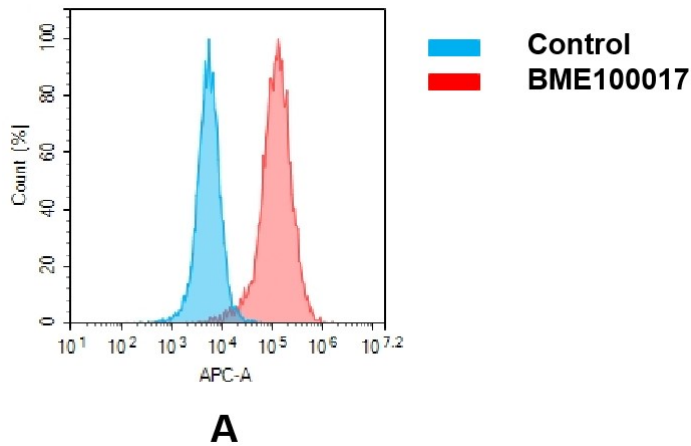


Figure 2. Flow cytometry analysis with Anti-CD30 (brentuximab ) on HEK293 cells transfected with human CD30 (Blue histogram) or HEK293 transfected with irrelevant protein (Red histogram).

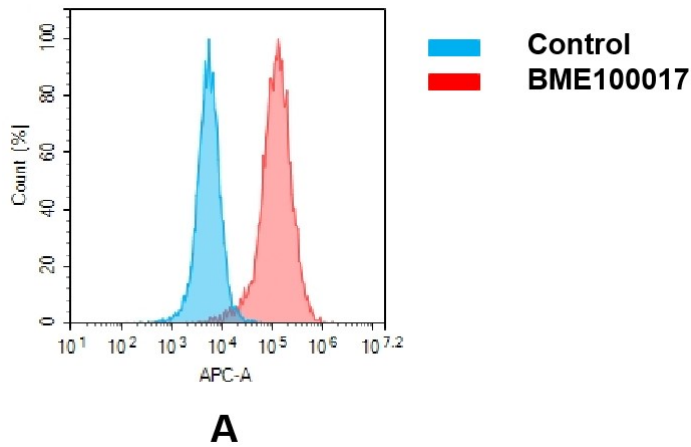


Figure 3. Flow cytometry analysis of antigen binding of anti-human CD30 mAb([TA421210]). (A) A clear peak shift of [TA421210] was seen compared to the control when incubated with CD30-expressing 8226 cells, indicating strong binding of [TA421210] to CD30. Antibodies were incubated at 2 µg/mL.

Anti-CD30 (brentuximab biosimilar) mAb ELISA

0.2 µg of CD30, His Tagged protein per well

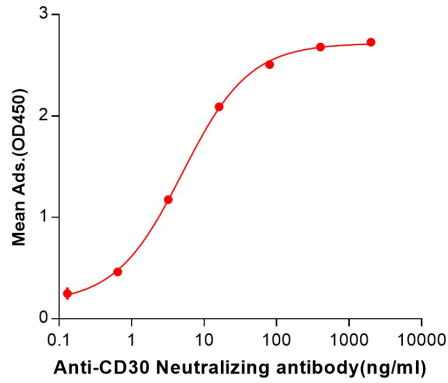


Figure 1. ELISA plate pre-coated by 2 µg/ml (100 µL/well) Human CD30, His tagged protein ([TP724016]) can bind Anti-CD30 Neutralizing antibody in a linear range of 0.13-80.0 ng/ml.

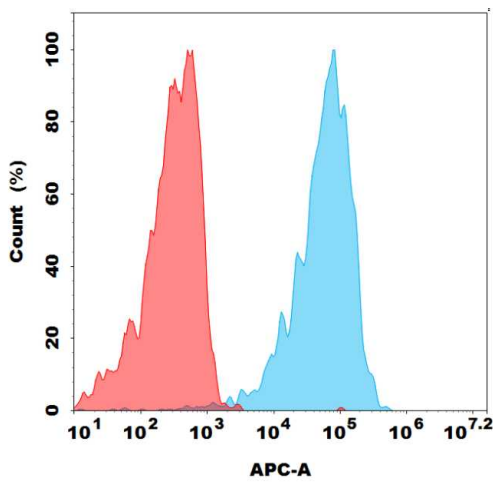


Figure 1. Flow cytometry analysis with 1µg/mL Biotinylated Anti-CD30 (brentuximab biosimilar) mAb on 293T-CD30 stable expression cell line (Blue histogram) or 293T (Red histogram).