

Product datasheet for **TA421210**

Anti-CD30 (brentuximab biosimilar) mAb

Product data:

Product Type:	Primary Antibodies
Applications:	ELISA, FC
Recommended Dilution:	ELISA 1:5000–10000 Flow Cyt 1µg/ml
Reactivity:	Human
Host:	Chimeric
Isotype:	IgG1, kappa
Clonality:	Monoclonal
Formulation:	Lyophilized from sterile PBS, pH 7.4. Normally 5 % - 8% trehalose is added as protectants before lyophilization. Please see Certificate of Analysis for specific instructions of reconstitution.
Reconstitution Method:	Lyophilized from sterile PBS, pH 7.4. Normally 5 % - 8% trehalose is added as protectants before lyophilization. Please see Certificate of Analysis for specific instructions of reconstitution.
Concentration:	Lot specific
Conjugation:	Unconjugated
Storage:	Store at -20°C to -80°C for 12 months in lyophilized form. After reconstitution, if not intended for use within a month, aliquot and store at -80°C (Avoid repeated freezing and thawing). Lyophilized proteins are shipped at ambient temperature.
Stability:	12 months from date of despatch
Database Link:	P28908
Background:	Research grade biosimilar. Not for use in therapeutic or diagnostic procedures for humans or animals.
Synonyms:	CD30; DIS166E; Ki-1; TNFRSF8
Note:	Common Name: SGN-35, cAC10-Val-Cit-MMAE



Product images:

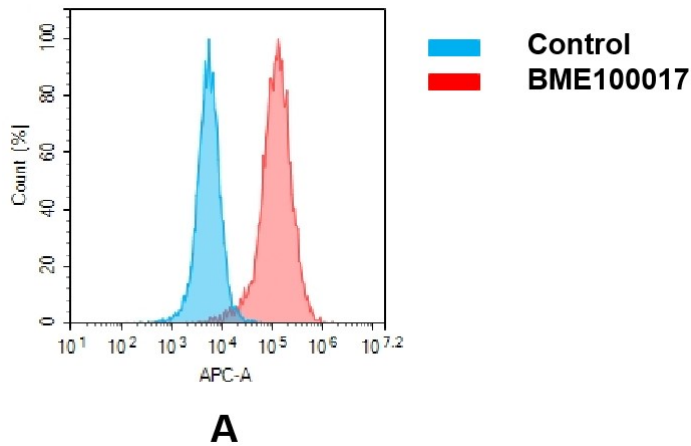


Figure 2. Flow cytometry analysis with Anti-CD30 (brentuximab) on HEK293 cells transfected with human CD30 (Blue histogram) or HEK293 transfected with irrelevant protein (Red histogram).

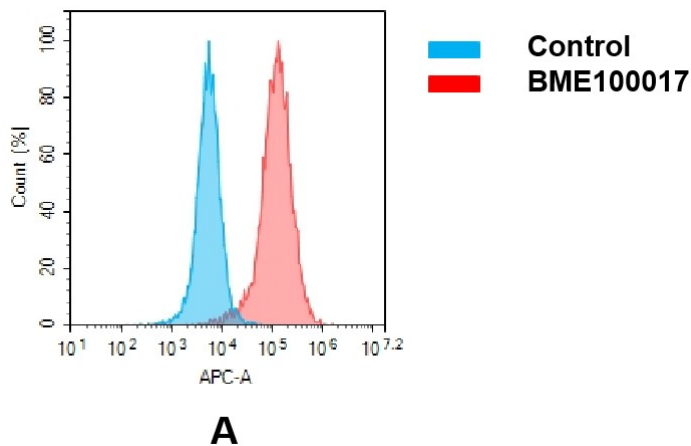


Figure 3. Flow cytometry analysis of antigen binding of anti-human CD30 mAb(TA421210). (A) A clear peak shift of TA421210 was seen compared to the control when incubated with CD30-expressing 8226 cells, indicating strong binding of TA421210 to CD30. Antibodies were incubated at $2 \mu\text{g}/\text{mL}$.

Anti-CD30 (brentuximab biosimilar) mAb ELISA

0.2 µg of CD30, His Tagged protein per well

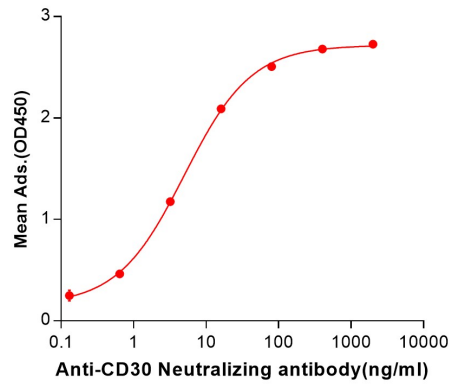


Figure 1. ELISA plate pre-coated by 2 µg/ml (100 µL/well) Human CD30, His tagged protein ([TP724016]) can bind Anti-CD30 Neutralizing antibody in a linear range of 0.13-80.0 ng/ml.

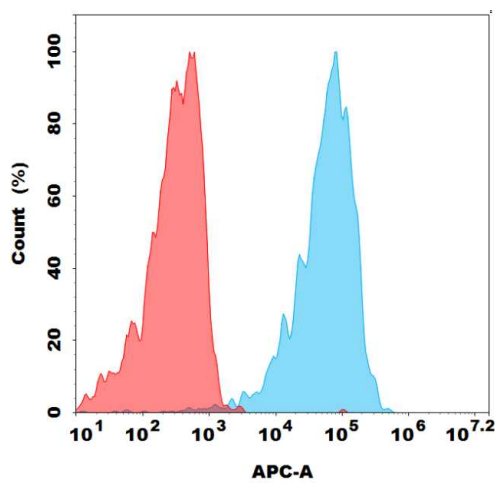


Figure 1. Flow cytometry analysis with 1µg/mL Biotinylated Anti-CD30 (brentuximab biosimilar) mAb on 293T-CD30 stable expression cell line (Blue histogram) or 293T (Red histogram).