

## Product datasheet for **TA400031**

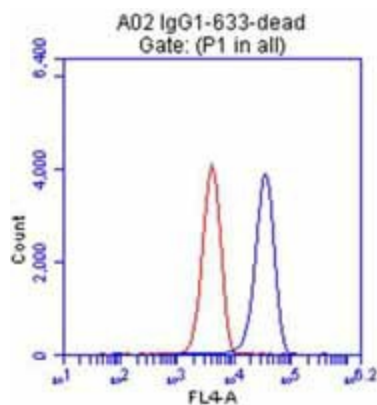
### LGR5 Mouse Monoclonal Antibody [Clone ID: OTI2A2]

#### Product data:

Product Type:	Primary Antibodies
Clone Name:	OTI2A2
Applications:	FC
Recommended Dilution:	FC
Reactivity:	Human, Mouse
Host:	Mouse
Isotype:	IgG1
Clonality:	Monoclonal
Immunogen:	Human recombinant protein fragment corresponding to amino acids 250-550 of human LGR5 (NP_003658) produced in HEK293T Cell.
Formulation:	PBS (pH7.4) containing 50% glycerol, 0.1% BSA and 0.02% Na <sub>3</sub>
Concentration:	0.5 mg/ml
Purification:	Purified from mouse ascites fluids by affinity chromatography
Conjugation:	DyLight 633
Storage:	Store at -20°C as received.
Stability:	Stable for 12 months from date of receipt.
Predicted Protein Size:	99.8 kDa
Gene Name:	leucine rich repeat containing G protein-coupled receptor 5
Database Link:	<a href="#">NP_003658</a> <a href="#">Entrez Gene 14160 Mouse</a> <a href="#">Entrez Gene 8549 Human</a> <a href="#">O75473</a>
Synonyms:	FEX; GPR49; GPR67; GRP49; HG38
Protein Families:	Druggable Genome, GPCR, Transmembrane



[View online »](#)

**Product images:**

HT29 cells are detached, fixed with 2% formaldehyde for 10 min, and permeabilized with 0.1% triton-X100. After blocking, the cells are stained with Dylight633-conjugated mouse IgG1 (red line) or Dylight633-conjugated LGR5 antibodies (blue line).