

Product datasheet for **TA400012**

HES1 Mouse Monoclonal Antibody [Clone ID: OTI4H1]

Product data:

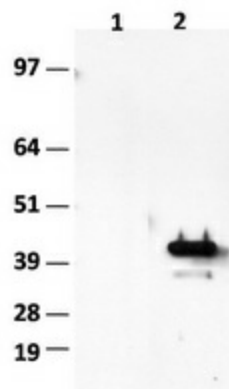
Product Type:	Primary Antibodies
Clone Name:	OTI4H1
Applications:	WB
Recommended Dilution:	WB: 1:1000
Reactivity:	Human
Host:	Mouse
Isotype:	IgG1
Clonality:	Monoclonal
Immunogen:	Recombinant protein expressed in E.coli corresponding to amino acids 1-280 of human HES1
Formulation:	PBS (pH7.4) containing 50% glycerol, 0.1% BSA and 0.02% NaN3
Concentration:	0.5 mg/ml
Purification:	Purified from cell culture supernatant by affinity chromatography
Conjugation:	Biotin
Storage:	Store at -20°C as received.
Stability:	Stable for 12 months from date of receipt.
Predicted Protein Size:	29.4 kDa
Gene Name:	hes family bHLH transcription factor 1
Database Link:	NP_005515 Entrez Gene 3280 Human Q14469
Background:	This protein belongs to the basic helix-loop-helix family of transcription factors. It is a transcriptional repressor of genes that require a bHLH protein for their transcription. The protein has a particular type of basic domain that contains a helix interrupting protein that binds to the N-box rather than the canonical E-box.
Synonyms:	bHLHb39; HES-1; HHL; HRY
Protein Families:	Adult stem cells, Cancer stem cells, Druggable Genome, ES Cell Differentiation/IPS, Stem cell relevant signaling - DSL/Notch pathway, Transcription Factors



[View online »](#)

Protein Pathways: Maturity onset diabetes of the young, Notch signaling pathway

Product images:



HEK293T cells were transfected with pCMV6-ENTRY control (Lane 1) or pCMV6-ENTRY HES1 (Lane 2) plasmids for 48 hrs. Equivalent amounts of cell lysates (5 ug per lane) were separated by SDS-PAGE and immunoblotted with anti-HES1-biotin and Streptavidin-HRP.