

Product datasheet for **TA400007**

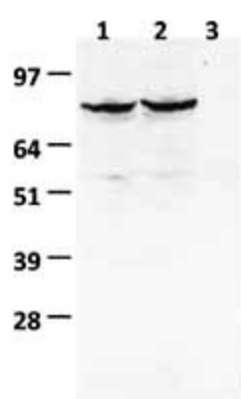
LGR5 Mouse Monoclonal Antibody [Clone ID: OTI2A2]

Product data:

Product Type:	Primary Antibodies
Clone Name:	OTI2A2
Applications:	WB
Recommended Dilution:	WB: 1:100
Reactivity:	Human, Mouse
Host:	Mouse
Isotype:	IgG1
Clonality:	Monoclonal
Immunogen:	Human recombinant protein fragment corresponding to amino acids 250-550 of human LGR5 (NP_003658) produced in HEK293T Cell.
Formulation:	PBS (pH7.4) containing 50% glycerol, 0.1% BSA and 0.02% Na ₃
Concentration:	0.5 mg/ml
Purification:	Purified from mouse ascites fluids by affinity chromatography
Conjugation:	Biotin
Storage:	Store at -20°C as received.
Stability:	Stable for 12 months from date of receipt.
Predicted Protein Size:	99.8 kDa
Gene Name:	leucine rich repeat containing G protein-coupled receptor 5
Database Link:	NP_003658 Entrez Gene 14160 Mouse Entrez Gene 8549 Human O75473
Synonyms:	FEX; GPR49; GPR67; GRP49; HG38
Protein Families:	Druggable Genome, GPCR, Transmembrane



[View online »](#)

Product images:

HEK293T cells were transfected with pCMV6-ENTRY control (Lane 1) or pCMV6-ENTRY LGR5 (Lane 2, 3) plasmids for 48 hrs. Equivalent amounts of cell lysates (5 ug per lane) were separated by SDS-PAGE and immunoblotted with anti-LGR5-Biotin and Streptavidin-HRP (Sample was either boiled [lane 2] or not boiled [Lane 3] before loading to the gel).