

## Product datasheet for **TA400004**

### **BCL10 Mouse Monoclonal Antibody [Clone ID: OTI4A8]**

#### **Product data:**

Product Type:	Primary Antibodies
Clone Name:	OTI4A8
Applications:	FC
Recommended Dilution:	FC 1:50
Reactivity:	Human
Host:	Mouse
Isotype:	IgG1
Clonality:	Monoclonal
Immunogen:	Full length human recombinant protein of human BCL10 (NP_003912) produced in HEK293T cell.
Formulation:	PBS (pH7.4) containing 0.02% NaN <sub>3</sub> ; store at 4C, do not freeze
Concentration:	0.5 mg/ml
Purification:	Purified from mouse ascites fluids by affinity chromatography
Conjugation:	PE
Storage:	Store at 4°C.
Stability:	Stable for 12 months from date of receipt.
Predicted Protein Size:	26.1 kDa
Gene Name:	BCL10 immune signaling adaptor
Database Link:	<a href="#">NP_003912</a> <a href="#">Entrez Gene 8915 Human</a> <a href="#">O95999</a>



[View online »](#)

**Background:**

This gene was identified by its translocation in a case of mucosa-associated lymphoid tissue (MALT) lymphoma. The protein encoded by this gene contains a caspase recruitment domain (CARD), and has been shown to induce apoptosis and to activate NF-kappaB. This protein is reported to interact with other CARD domain containing proteins including CARD9, 10, 11 and 14, which are thought to function as upstream regulators in NF-kappaB signaling. This protein is found to form a complex with MALT1, a protein encoded by another gene known to be translocated in MALT lymphoma. MALT1 and this protein are thought to synergize in the activation of NF-kappaB, and the deregulation of either of them may contribute to the same pathogenetic process that leads to the malignancy.

**Synonyms:**

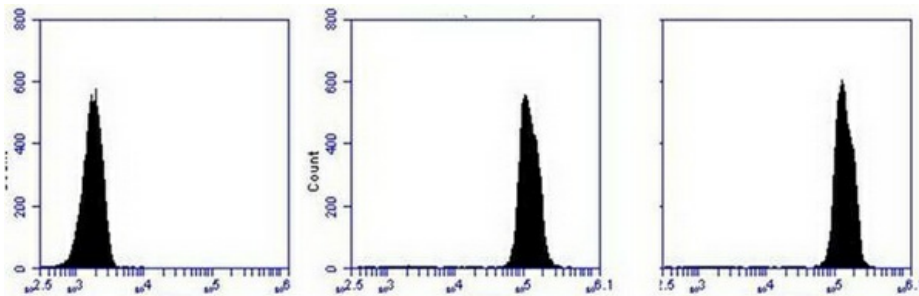
c-E10; CARMEN; CIPER; CLAP; IMD37; mE10

**Protein Families:**

Druggable Genome

**Protein Pathways:**

B cell receptor signaling pathway, T cell receptor signaling pathway

**Product images:**

Jurkat T cells are fixed 2% formaldehyde for 20 min, then permeabilized with 0.1% saponin. The cells are then stained with a PE-labeled isotope control antibody, or 4A8 or 6A4 anti-Bcl10 antibodies.