

Product datasheet for TA398272

Goat Polyclonal Antibody

Product data:

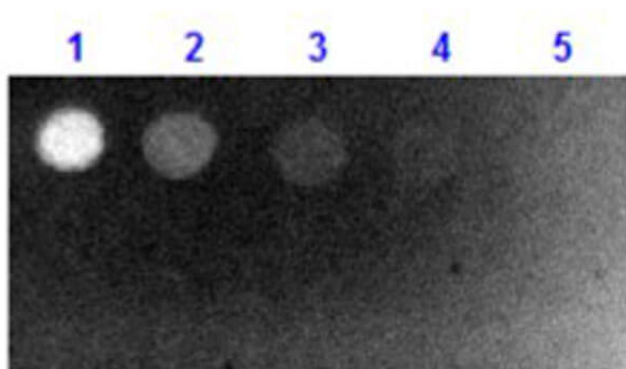
Product Type:	Primary Antibodies
Applications:	IF, WB
Recommended Dilution:	WB: User Optimized IF: 1:500 - 1:2,500 FLISA: User Optimized
Host:	Goat
Clonality:	Polyclonal
Immunogen:	Biotin conjugated to Keyhole Limpet Hemocyanin (KLH)
Specificity:	Fab Biotin antibody was prepared from monospecific antiserum by immunoaffinity chromatography using Biotin coupled to sepharose beads followed by papain digestion and chromatographic separation. Assay by immunoelectrophoresis resulted in a single precipitin arc against anti-Goat Serum, anti-Fluorescein. No reaction was observed against anti-papain or anti-Goat IgG F(c).
Formulation:	0.02 M Potassium Phosphate, 0.15 M Sodium Chloride, pH 7.2
Reconstitution Method:	Restore with deionized water (or equivalent) - Reconstitution Volume: 1.0 mL
Concentration:	1.0 mg/mL - lot specific
Conjugation:	FITC
Storage:	Store vial at 4° C prior to restoration. For extended storage aliquot contents and freeze at -20° C or below. Avoid cycles of freezing and thawing. Centrifuge product if not completely clear after standing at room temperature. This product is stable for several weeks at 4° C as an undiluted liquid. Dilute only prior to immediate use.
Stability:	Expiration date is one (1) year from date of receipt.
Background:	Fab Biotin antibody recognizes Biotin. Biotin, also known as vitamin H or coenzyme R, is a water-soluble B-vitamin (vitamin B7). It is composed of a ureido (tetrahydroimidazole) ring fused with a tetrahydrothiophene ring. A valeric acid substituent is attached to one of the carbon atoms of the tetrahydrothiophene ring. Biotin is a coenzyme for carboxylase enzymes, involved in the synthesis of fatty acids, isoleucine, and valine, and in gluconeogenesis.
Synonyms:	Goat Fab Anti-Biotin Antibody Fluorescein Conjugation, Goat Fab Anti-Biotin FITC Conjugated Antibody



[View online »](#)

Note: Fab Anti-Biotin Antibody Fluorescein Conjugated has been tested by dot blot and is designed for immunofluorescence microscopy, fluorescence based plate assays (FLISA) and fluorescent western blotting. This product is also suitable for multiplex analysis, including multicolor imaging, utilizing various commercial platforms. Specific conditions for reactivity should be optimized by the end user.

Product images:



Dot Blot results of Goat Fab Anti-Biotin Antibody Fluorescein Conjugate. Dots top row: Biotin-BSA Conjugate. Dots bottom row: BSA alone. Load: (1) 100ng, (2) 33.3ng, (3) 11.1 ng, (4) 3.70ng, (5) 1.23ng. Primary Antibody: none. Secondary Antibody: Goat Fab Anti-Biotin Antibody FITC at 1ug/mL in MB-070 1hr RT. Imaged with BioRad ChemiDoc, Fluorescein filter.