

Product datasheet for **TA398249**

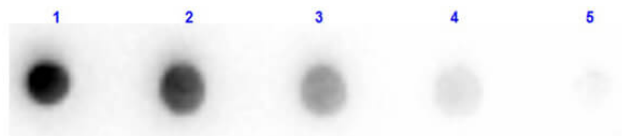
F(ab')₂ Sheep IgG (H&L) Antibody Pre-Adsorbed

Product data:

Product Type:	Secondary Antibodies
Product Name:	F(ab') ₂ Sheep IgG (H&L) Antibody Pre-Adsorbed
Applications:	ELISA, IHC, WB
Recommended Dilution:	WB: 1:2,000 - 1:10,000 IHC: 1:1,000 - 1:5,000 ELISA: 1:20,000 - 1:100,000
Host:	Donkey
Immunogen:	Sheep IgG whole molecule
Formulation:	0.02 M Potassium Phosphate, 0.15 M Sodium Chloride, pH 7.2
Concentration:	0.95 mg/mL - lot specific
Conjugation:	Unconjugated
Storage:	Store vial at 4° C prior to opening. This product is stable for several weeks at 4° C as an undiluted liquid. Dilute only prior to immediate use. For extended storage aliquot contents and freeze at -20° C or below. Avoid cycles of freezing and thawing.
Note:	F(ab') ₂ Anti-Sheep IgG Antibody has been tested by dot blot and is suitable for immunomicroscopy and flow cytometry or FACS analysis as well as other antibody based fluorescent assays requiring extremely low background levels, absence of F(c) mediated binding, lot-to-lot consistency, high titer and specificity. The maximum amount of reagent required to stain 1 x 10 ⁶ cells in flow cytometry is approximately 1.0 µg of antibody. Lesser amounts of reagent may be sufficient for staining. Optimal titers for other applications should be determined by the researcher. As a general guideline dilutions of 1:100 to 1:250 should be suitable for most applications.



[View online »](#)

Product images:

Dot Blot Results of Donkey F(ab')₂ Anti-Sheep IgG Antibody Min X Ch GP Ham Hs Hu Ms Rb Rt Serum Proteins. Sheep IgG (1) 100ng, (2) 33.33ng, (3) 11.11ng, (4) 3.70ng, (5) 1.23ng. Primary Antibody: Donkey F(ab')₂ Anti-Sheep IgG Antibody at 1 µg/mL at RT for 1hr. Secondary Antibody: Anti-Donkey IgG HRP at 1:40,000 for 30 mins at RT. Exposure: 1 sec.