

## Product datasheet for **TA398195**

### **F(ab')<sub>2</sub> Rabbit IgG Antibody Rhodamine Conjugated Pre-Adsorbed**

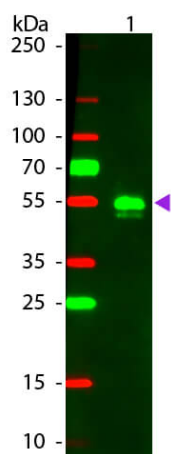
#### **Product data:**

<b>Product Type:</b>	Secondary Antibodies
<b>Product Name:</b>	F(ab') <sub>2</sub> Rabbit IgG Antibody Rhodamine Conjugated Pre-Adsorbed
<b>Applications:</b>	IF
<b>Recommended Dilution:</b>	<b>IF:</b> 1:500-1:2,500
<b>Host:</b>	Donkey
<b>Immunogen:</b>	Rabbit IgG whole molecule
<b>Formulation:</b>	0.02 M Potassium Phosphate, 0.15 M Sodium Chloride, pH 7.2
<b>Reconstitution Method:</b>	Restore with deionized water (or equivalent) - Reconstitution Volume: 500 µL
<b>Concentration:</b>	1.0 mg/mL - lot specific
<b>Conjugation:</b>	TRITC
<b>Storage:</b>	Store vial at 4° C prior to restoration. For extended storage aliquot contents and freeze at -20° C or below. Avoid cycles of freezing and thawing. Centrifuge product if not completely clear after standing at room temperature. This product is stable for several weeks at 4° C as an undiluted liquid. Dilute only prior to immediate use.
<b>Note:</b>	F(ab') <sub>2</sub> Anti-Rabbit IgG Rhodamine Conjugated Antibody has been tested by western blot and is designed for immunofluorescence microscopy, fluorescence based plate assays (FLISA) and fluorescent western blotting. This product is also suitable for multiplex analysis, including multicolor imaging, utilizing various commercial platforms requiring extremely low background levels, absence of F(c) mediated binding, lot-to-lot consistency, high titer and specificity.



[View online »](#)

## Product images:



Western Blot of Donkey anti-Rabbit IgG Pre-Absorbed Rhodamine Conjugated Secondary Antibody. Lane 1: Rabbit IgG. Lane 2: None. Load: 50 ng per lane. Primary antibody: None. Secondary antibody: Rhodamine donkey secondary antibody at 1:1,000 for 60 min at RT. Block: MB-070 for 30 min at RT. Predicted/Observed size: 28 & 55 kDa, 55 kDa for Rabbit IgG. Other band(s): None.