

Product datasheet for **TA398192**

F(ab')₂ Rabbit IgG (H&L) Antibody Phycoerythrin conjugated

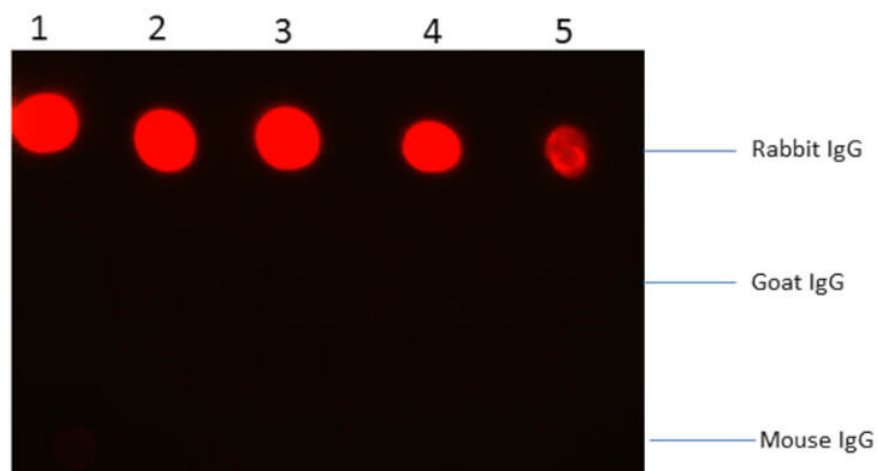
Product data:

Product Type:	Secondary Antibodies
Product Name:	F(ab') ₂ Rabbit IgG (H&L) Antibody Phycoerythrin conjugated
Applications:	FC, IF
Recommended Dilution:	IF: 1:100 - 1:250 FC: 1:100 - 1:250
Reactivity:	Rabbit
Host:	Goat
Immunogen:	Rabbit IgG whole molecule
Formulation:	0.02 M Potassium Phosphate, 0.15 M Sodium Chloride, pH 7.2
Reconstitution Method:	Restore with deionized water (or equivalent) - Reconstitution Volume: 1.0 mL
Concentration:	0.5 mg/mL - lot specific
Conjugation:	Phycoerythrin
Storage:	Store vial at 4° C prior to restoration. Restore with deionized water (or equivalent). This product is stable at 4° C as an undiluted liquid. Dilute only prior to immediate use. Centrifuge product if not completely clear after standing at room temperature. Do not freeze after reconstitution. Store reagent in the dark. Use subdued lighting during handling and incubation of cells prior to analysis.
Note:	F(ab') ₂ Anti-Rabbit IgG Phycoerythrin Conjugated Secondary Antibody has been tested by dot blot and is ideal for ELISA, western blotting, Immunohistochemistry, as well as other antibody detection methods.



[View online »](#)

Product images:



Dot Blot of Fab2 Goat anti-Rabbit IgG Antibody Phycoerythrin Conjugated. Antigen: Row 1: Rabbit IgG Row 2: Goat IgG Row 3: Mouse IgG Load: Lane 1 - 200ng Lane 2 - 66.7ng Lane 3 - 22.2ng Lane 4 - 7.4ng Lane 5 - 2.5ng Primary antibody: N/A Secondary antibody: Fab2 Goat anti-Rabbit IgG Antibody Phycoerythrin Conjugated at 1:1,000 for 60 min at RT. Block: MB-070 for 1 hour at RT