

Product datasheet for **TA398186**

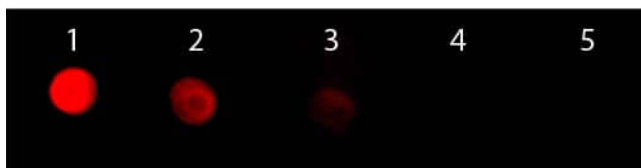
F(ab')₂ Rabbit IgG (H&L) Antibody Rhodamine Conjugated

Product data:

Product Type:	Secondary Antibodies
Product Name:	F(ab') ₂ Rabbit IgG (H&L) Antibody Rhodamine Conjugated
Applications:	IF
Recommended Dilution:	IF: 1:500-1:2,500
Host:	Goat
Immunogen:	Rabbit IgG whole molecule
Formulation:	0.02 M Potassium Phosphate, 0.15 M Sodium Chloride, pH 7.2
Reconstitution Method:	Restore with deionized water (or equivalent) - Reconstitution Volume: 500 µL
Concentration:	1.0 mg/mL - lot specific
Conjugation:	TRITC
Storage:	Store vial at 4° C prior to restoration. For extended storage aliquot contents and freeze at -20° C or below. Avoid cycles of freezing and thawing. Centrifuge product if not completely clear after standing at room temperature. This product is stable for several weeks at 4° C as an undiluted liquid. Dilute only prior to immediate use.
Note:	F(ab') ₂ Anti-Rabbit IgG Rhodamine Conjugated Antibody has been tested by dot blot and is designed for immunofluorescence microscopy, fluorescence based plate assays (FLISA) and fluorescent western blotting. This product is also suitable for multiplex analysis, including multicolor imaging, utilizing various commercial platforms requiring extremely low background levels, absence of F(c) mediated binding, lot-to-lot consistency, high titer and specificity.



[View online »](#)

Product images:

Dot Blot of F(ab')₂ Goat anti-Rabbit IgG Antibody Rhodamine Conjugated. Antigen: Rabbit IgG. Load: Lane 1 - 100 ng Lane 2 - 33.3 ng Lane 3 - 11.1 ng Lane 4 - 3.70 ng Lane 5 - 1.23 ng. Primary antibody: n/a. Secondary antibody: F(ab')₂ Goat anti-Rabbit IgG Antibody Rhodamine Conjugated at 1:1,000 for 60 min at RT. Block: MB-070 for 60 min at RT.