

Product datasheet for **TA398173**

F(ab')₂ Mouse IgG (H&L) Antibody Pre-Adsorbed

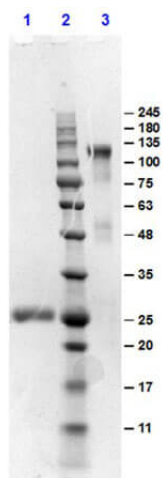
Product data:

Product Type:	Secondary Antibodies
Product Name:	F(ab') ₂ Mouse IgG (H&L) Antibody Pre-Adsorbed
Applications:	ELISA, IHC, WB
Recommended Dilution:	WB: 1:2,000 - 1:10,000 IHC: 1:1,000 - 1:5,000 ELISA: 1:20,000
Host:	Goat
Immunogen:	Mouse IgG whole molecule
Formulation:	0.02 M Potassium Phosphate, 0.15 M Sodium Chloride, pH 7.2
Concentration:	1.0 mg/mL - lot specific
Conjugation:	Unconjugated
Storage:	Store vial at 4° C prior to opening. This product is stable for several weeks at 4° C as an undiluted liquid. Dilute only prior to immediate use. For extended storage aliquot contents and freeze at -20° C or below. Avoid cycles of freezing and thawing.
Note:	F(ab') ₂ Anti-Mouse IgG Antibody has been tested by ELISA and is suitable for immunomicroscopy and flow cytometry or FACS analysis as well as other antibody based fluorescent assays requiring extremely low background levels, absence of F(c) mediated binding, lot-to-lot consistency, high titer and specificity. The maximum amount of reagent required to stain 1 x 10 ⁶ cells in flow cytometry is approximately 1.0 µg of antibody. Lesser amounts of reagent may be sufficient for staining. Optimal titers for other applications should be determined by the researcher. As a general guideline dilutions of 1:100 to 1:250 should be suitable for most applications.



[View online »](#)

Product images:



SDS-PAGE results of Goat F(ab')₂ Anti-MOUSE IgG Antibody Min X human serum proteins. Lane 1: reduced Goat F(ab')₂ Anti-MOUSE IgG Min X human. Lane 2: Opal PreStained Molecular Weight Ladder (p/n MB-210-0500). Lane 3: non-reduced Goat F(ab')₂ Anti-MOUSE IgG Min X human. Load: 1.0µg. 4-20% SDS Gel, Coomassie Blue Stained.