

Product datasheet for **TA398125**

F(ab')₂ Dog IgG (H&L) Antibody Texas Red™ Conjugated

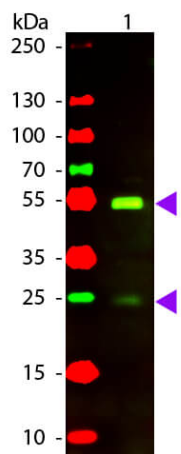
Product data:

Product Type:	Secondary Antibodies
Product Name:	F(ab') ₂ Dog IgG (H&L) Antibody Texas Red™ Conjugated
Applications:	FC, IF
Recommended Dilution:	IF: 1:500-1:2,500 FC: 1:500 - 1:2,500 FLISA: 1:10,000 - 1:50,000
Host:	Rabbit
Immunogen:	Dog IgG whole molecule
Formulation:	0.02 M Potassium Phosphate, 0.15 M Sodium Chloride, pH 7.2
Reconstitution Method:	Restore with deionized water (or equivalent) - Reconstitution Volume: 500 µL
Concentration:	1.0 mg/mL - lot specific
Conjugation:	Texas Red
Storage:	Store vial at 4° C prior to restoration. For extended storage aliquot contents and freeze at -20° C or below. Avoid cycles of freezing and thawing. Centrifuge product if not completely clear after standing at room temperature. This product is stable for several weeks at 4° C as an undiluted liquid. Dilute only prior to immediate use.
Note:	F(ab') ₂ Anti-Dog IgG Texas Red Antibody has been tested by western blot and is designed for immunofluorescence microscopy, fluorescence based plate assays (FLISA) and fluorescent western blotting. This product is also suitable for multiplex analysis, including multicolor imaging, utilizing various commercial platforms.



[View online »](#)

Product images:



Western Blot of Rabbit anti-Dog IgG Texas Red Conjugated Antibody. Lane 1: Dog IgG. Lane 2: None. Load: 50 ng per lane. Primary antibody: None. Secondary antibody: Texas Red rabbit secondary antibody at 1:1,000 for 60 min at RT. Block: MB-070 for 30 min at RT. Predicted/Observed size: 28 & 55 kDa, 28 & 55 kDa for Dog IgG. Other band(s): None.