

Product datasheet for **TA398118**

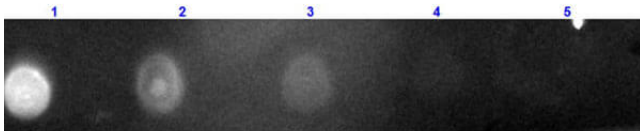
F(ab')₂ Chicken IgG (H&L) Antibody Texas Red™ Conjugated

Product data:

Product Type:	Secondary Antibodies
Product Name:	F(ab') ₂ Chicken IgG (H&L) Antibody Texas Red™ Conjugated
Applications:	IF
Recommended Dilution:	IF: 1:500-1:2,500
Host:	Rabbit
Immunogen:	Chicken IgG whole molecule
Formulation:	0.02 M Potassium Phosphate, 0.15 M Sodium Chloride, pH 7.2
Reconstitution Method:	Restore with deionized water (or equivalent) - Reconstitution Volume: 500 µL
Concentration:	1 mg/mL - lot specific
Conjugation:	Texas Red
Storage:	Store vial at 4° C prior to restoration. For extended storage aliquot contents and freeze at -20° C or below. Avoid cycles of freezing and thawing. Centrifuge product if not completely clear after standing at room temperature. This product is stable for several weeks at 4° C as an undiluted liquid. Dilute only prior to immediate use.
Note:	F(ab') ₂ Anti-Chicken IgG Texas Red Conjugated Antibody has been tested by dot blot and is designed for immunofluorescence microscopy, fluorescence based plate assays (FLISA) and fluorescent western blotting. This product is also suitable for multiplex analysis, including multicolor imaging, utilizing various commercial platforms.



[View online »](#)

Product images:

Dot Blot results of Rabbit F(ab')₂ Anti-Chicken IgG Antibody Texas Red™ Conjugated. Dots are Chicken IgG/IgY (p/n 003-0102) at (1) 100ng, (2) 33.3ng, (3) 11.1ng, (4) 3.70ng, (5) 1.23ng. Blocking: MB-070 for 30 min at RT. Antibody: Rabbit F(ab')₂ Anti-Chicken IgG Antibody Texas Red™ (p/n 703-409-002) at 1µg/mL for 1hr at RT. Imaged with BioRad ChemiDoc, DL549 filter.