

## Product datasheet for **TA398105**

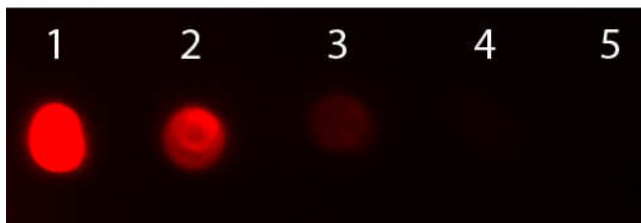
### **F(ab')<sub>2</sub> Bovine IgG (H&L) Antibody Texas Red™ Conjugated**

#### **Product data:**

|                               |  |
|-------------------------------|--|
| <b>Product Type:</b>          | Secondary Antibodies   |
| <b>Product Name:</b>          | F(ab') <sub>2</sub> Bovine IgG (H&L) Antibody Texas Red™ Conjugated  |
| <b>Applications:</b>          | IF   |
| <b>Recommended Dilution:</b>  | <b>IF:</b> 1:500-1:2,500   |
| <b>Host:</b>                  | Rabbit   |
| <b>Immunogen:</b>             | Bovine IgG whole molecule  |
| <b>Formulation:</b>           | 0.02 M Potassium Phosphate, 0.15 M Sodium Chloride, pH 7.2   |
| <b>Reconstitution Method:</b> | Restore with deionized water (or equivalent) - Reconstitution Volume: 500 µL   |
| <b>Concentration:</b>         | 1.0 mg/mL - lot specific   |
| <b>Conjugation:</b>           | Texas Red  |
| <b>Storage:</b>               | Store vial at 4° C prior to restoration. For extended storage aliquot contents and freeze at -20° C or below. Avoid cycles of freezing and thawing. Centrifuge product if not completely clear after standing at room temperature. This product is stable for several weeks at 4° C as an undiluted liquid. Dilute only prior to immediate use.        |
| <b>Note:</b>                  | F(ab') <sub>2</sub> Anti-Bovine IgG Texas Red Conjugated Antibody has been tested by dot blot and is designed for immunofluorescence microscopy, fluorescence based plate assays (FLISA) and fluorescent western blotting. This product is also suitable for multiplex analysis, including multicolor imaging, utilizing various commercial platforms. |



[View online »](#)

**Product images:**

Dot Blot of Rabbit anti-Fab2 Bovine IgG Antibody Texas Red Conjugated. Antigen: Bovine IgG. Load: Lane 1 - 200 ng Lane 2 - 66.7 ng Lane 3 - 22.2 ng Lane 4 - 7.41 ng Lane 5 - 2.47 ng. Primary antibody: n/a. Secondary antibody: Rabbit anti-Fab2 Bovine IgG Antibody Texas Red Conjugated at 1:1,000 for 60 min at RT. Block: MB-070 for 60 min at RT.