

Product datasheet for **TA398098**

Llama IgG2 Antibody

Product data:

Product Type: Secondary Antibodies

Product Name: Llama IgG2 Antibody

Applications: ELISA, IHC, WB

Recommended Dilution: **WB:** 1:20,000-1:40,000

IHC: User Optimized

ELISA: 1:60,000

Host: Rabbit

Immunogen: Llama IgG2

Formulation: 0.01 M Sodium Phosphate, 0.25 M Sodium Chloride, pH 7.2

Concentration: 1.07 mg/ml - lot specific

Conjugation: Unconjugated

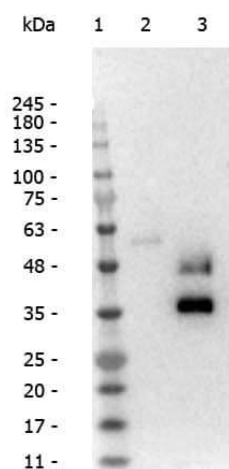
Storage: Store vial at -20° C prior to opening. This product is stable at 4° C as an undiluted liquid. For extended storage, aliquot contents and freeze at -20° C or below. Avoid cycles of freezing and thawing. Dilute only prior to immediate use.

Note: Antibody Anti-Llama IgG2 has been tested by ELISA, dot blot, and western blot and is suitable for immunoblotting (western or dot blot), ELISA, and immunohistochemistry assays requiring lot-to-lot consistency.



[View online »](#)

Product images:



Western Blot of Rabbit Anti-Llama IgG2 antibody. Lane 1: Opal Pre-stained Ladder (MB-210-0500). Lane 2: Llama IgG1 (p/n 025-0142). Lane 3: Llama IgG2 (p/n 025-0143). Load: 50 ng per lane. Product: Rabbit Anti-Llama IgG2 at 1:40,000. Secondary antibody: Gt-a-Rb HRP (p/n 611-103-122) at 1:40,000 for 30 min at RT. Block: (p/n MB-070) overnight at 4°C. Predicted/Observed size: 48 kDa for Llama IgG2. Other band(s): ~38 kDa non-specific. Non-specific background against IgG1 (HC) can be reduced by further diluting the antibody. User optimization recommended.