

Product datasheet for **TA398097**

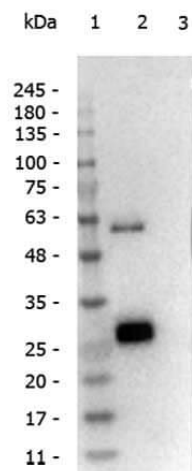
Llama IgG1 Antibody

Product data:

Product Type:	Secondary Antibodies
Product Name:	Llama IgG1 Antibody
Applications:	ELISA, IP, WB
Recommended Dilution:	WB: 1:20,000 or 1:40,000 ELISA: 1 ug/ml
Host:	Rabbit
Immunogen:	Llama IgG1
Formulation:	0.02 M Potassium Phosphate, 0.15 M Sodium Chloride, pH 7.2
Concentration:	1.0 mg/ml - lot specific
Conjugation:	Unconjugated
Storage:	Store vial at -20° C prior to opening. This product is stable at 4° C as an undiluted liquid. For extended storage, aliquot contents and freeze at -20° C or below. Avoid cycles of freezing and thawing. Dilute only prior to immediate use.
Note:	Antibody Anti-Llama IgG1 has been tested by ELISA, dot blot, and western blot and is suitable for IEP, immunoblotting (western or dot blot), ELISA, and immunohistochemistry assays requiring lot-to-lot consistency.



[View online »](#)

Product images:

Western Blot of Rabbit Anti-Llama IgG1 antibody. Lane 1: Opal Pre-stained Ladder (p/n MB-210-0500). Lane 2: Llama IgG1 (p/n 025-0142). Lane 3: Llama IgG2 (p/n 025-0143). Load: 50 ng per lane. Product: Rabbit Anti-Llama IgG1 at 1:20,000. Secondary antibody: Gt-a-Rb HRP (p/n 611-103-122) at 1:40,000 for 30 min at RT. Block: (p/n MB-070) overnight at 4°C. Predicted/Observed size: 50 kDa, 30 kDa for Llama IgG1. Other band(s): none.