

Product datasheet for **TA398079**

Monkey IgG (H&L) Antibody

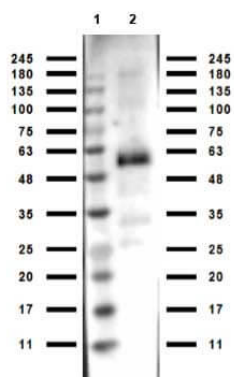
Product data:

Product Type:	Secondary Antibodies
Product Name:	Monkey IgG (H&L) Antibody
Applications:	ELISA, WB
Recommended Dilution:	WB: 1:10,000 - 1:60,000 ELISA: 1:50,000 - 1:100,000
Host:	Rabbit
Immunogen:	Anti-Monkey IgG (H&L) was produced by repeated immunization with monkey IgG in rabbit.
Formulation:	0.02 M Potassium Phosphate, 0.15 M Sodium Chloride, pH 7.2
Concentration:	1.0 mg/ml - lot specific
Conjugation:	Unconjugated
Storage:	Store vial at 4° C prior to opening. This product is stable for several weeks at 4° C as an undiluted liquid. Dilute only prior to immediate use. For extended storage aliquot contents and freeze at -20° C or below. Avoid cycles of freezing and thawing.
Note:	Anti-Monkey IgG (H&L) has been tested by ELISA and western blot and is suitable for use in immunoelectrophoresis, western-blot, competitive western-blot, ELISA and competitive ELISA assays. Specific conditions for reactivity and signal detection should be optimized by the end user.



[View online »](#)

Product images:



Western Blot of Rabbit anti-Monkey IgG antibody. Lane 1: Opal PreStained Molecular Ladder (p/n MB-210-0500). Lane 2: Monkey IgG (p/n 017-0102). Load: 50 ng per lane. Primary antibody: Monkey IgG antibody at 1:1000 for overnight at 4°C. Secondary antibody: Gt-a-Rb HRP (p/n 611-103-122) secondary antibody at 1:70,000 for 30 min at RT. Block: MB-070 for 30 min at RT. Predicted/Observed size: 55 kda for Anti-Monkey IgG.