

## Product datasheet for **TA398073**

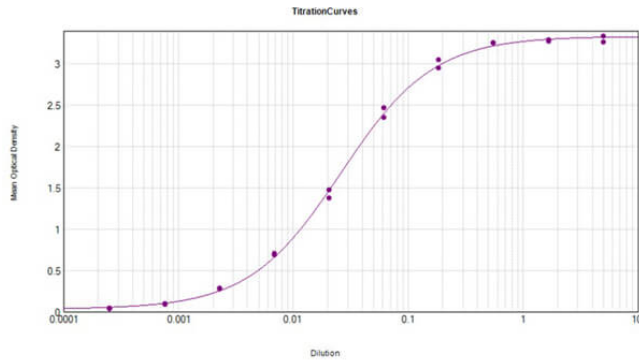
### Donkey IgG (H&L) Antibody

#### Product data:

Product Type:	Secondary Antibodies
Product Name:	Donkey IgG (H&L) Antibody
Applications:	ELISA, IHC, WB
Recommended Dilution:	<b>WB:</b> 1:2,000 - 1:10,000 <b>IHC:</b> 1:1,000 - 1:5,000 <b>ELISA:</b> 1:20,000 - 1:100,000
Host:	Goat
Immunogen:	Donkey IgG whole molecule
Formulation:	0.02 M Potassium Phosphate, 0.15 M Sodium Chloride, pH 7.2
Concentration:	2.0 mg/mL - lot specific
Conjugation:	Unconjugated
Storage:	Store vial at 4° C prior to opening. This product is stable for several weeks at 4° C as an undiluted liquid. Dilute only prior to immediate use. For extended storage aliquot contents and freeze at -20° C or below. Avoid cycles of freezing and thawing.
Note:	Anti-Donkey IgG antibody has been tested by ELISA and is suitable for ELISA, western blot, and immunohistochemistry, as well as other assays requiring lot-to-lot consistency.



[View online »](#)

**Product images:**

ELISA Results of Goat Anti-Donkey IgG Antibody tested against purified Donkey IgG. Each well was coated in duplicate with 1.0  $\mu\text{g}$  of Donkey IgG (p/n 016-0102). The working dilution is 1:38,200. The starting dilution of antibody was 5 $\mu\text{g}/\text{ml}$  and the X-axis represents the Log<sub>10</sub> of a 3-fold dilution. This titration is a 4-parameter curve fit where the IC<sub>50</sub> is defined as the titer of the antibody. Assay performed using HRP Conjugate Stabilizer (p/n MB-076), Donkey Anti-Goat IgG HRP conjugated (p/n 605-703-125), and TMB substrate (p/n TMBE-1000).